

# Travel in Valmiera municipality!

EN 

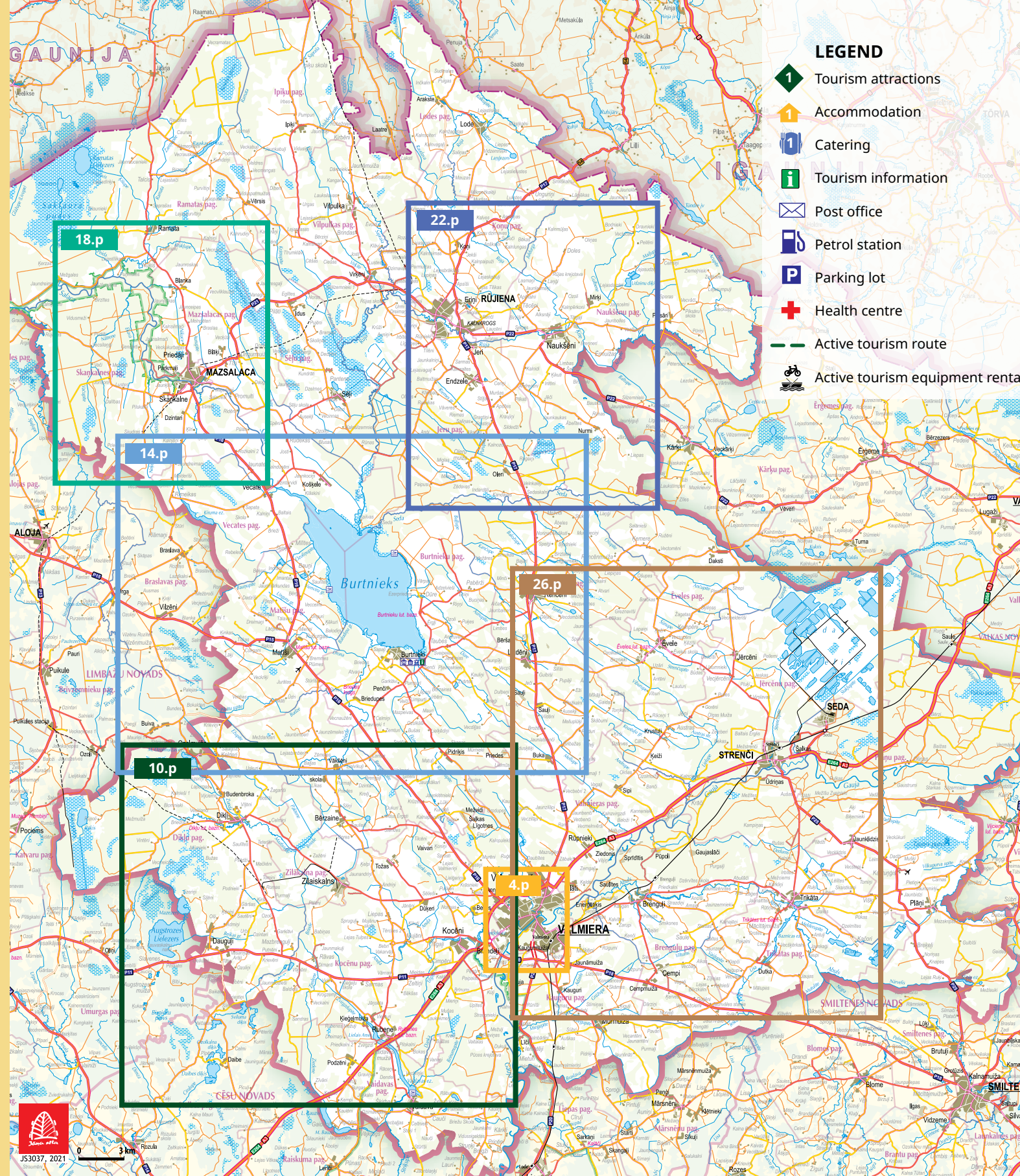
**VISIT  
VALMIERA.**

[visit.valmiera.lv](https://visit.valmiera.lv)



# 10 FACTS ABOUT VALMIERA MUNICIPALITY

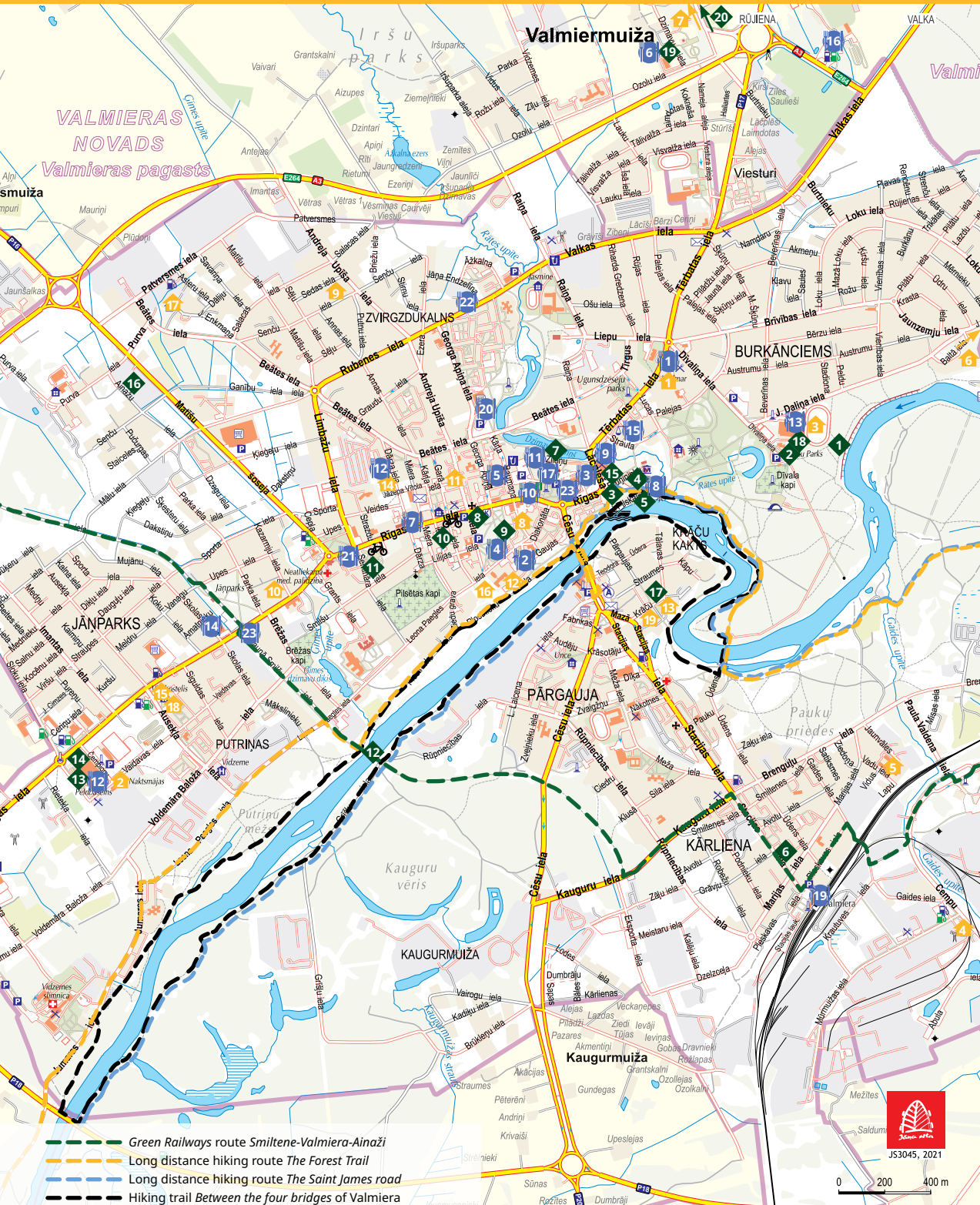
- 1 Valmiera municipality is the second largest municipality in Latvia in terms of territorial planning.
- 2 The city of Valmiera celebrates its birthday based on the opening of St. Simons Church - 1283.
- 3 The beginnings of theater, song festival and various Latvian-wide cultural events can be found in the Valmiera municipality. For example, Dikļi is known as the cradle of the Latvian Song Festival.
- 4 Lake Burtnieks is located in Valmiera municipality, it is the fourth largest lake in Latvia.
- 5 In 1927, famous bicycle master Gustavs Ērenpreiss were born in Mazsalaca. He was the first founder of bicycle factory and maintenance workshop in Latvia.



- 6 Valmiera municipality is rich with various natural treasures - rivers like Gauja and Salaca, white sandstone outcrop Sietīņezis, Skaņaiskalns Nature park, Ķoņi hill, Zilaishkalns, marshes and more.
- 7 Rūjiena is known as the *capital of ice cream*. At the beginning of summer, a particularly delicious *Ice Cream Festival* is celebrated.
- 8 Nature reserve Seda marsh is an excellent place for nature and birdwatching.
- 9 Strenči is the *capital of Gauja river rafters*. Every year in May, rafting skills are honored at the *Gauja Raftsmen festival*.
- 10 Valmiera municipality has a highly developed sports infrastructure - Jānis Daliņš Stadium and the BMX track of Māris Štrombergs are just a few examples.

## VALMIERAS NOVADS.





### 1 Gauja River Steep banks

One of the most picturesque and beautiful places at the shores of Gauja in Valmiera. 80 m wide and 10-15 m high, the most complete outcrops of the third top terrace in the Gauja valley. The shore opens up a snoring view to the river and the opposite shore. Gauja is suitable for boating, but the pathways by the shores can be used for walks, bike rides and leisure.

Atpūtas parks, Valmiera  
GPS 57.540209, 25.438903

### 2 Park of Senses by the Gauja River Steep banks (V-X)

The 2 km long barefoot trail consists of various natural elements and coverings combined with exercises to train your agility. Furthermore, here is a 5-11 m high *Tree Trail* made out of commonly find items in Latvian houses. 4 cable rides over the Gauja River. *Net cube* are also available.

J. Daliņa iela 2, Valmiera  
T.+371 27879242  
sajutuparks.lv  
GPS 57.540214, 25.438918

### 3 Valmiera St. Simon's Church

The church was built at the end of the 13th century, almost completely keeping its medieval looks. Several valuable art monuments can be found in the church: burial plaques

(15-16th century), the Ladegast pipe organ (1886), a pulpit with paintings from 1730s. You can see the bells and clockwork of the church. The panoramic view of Valmiera opens from the viewing area of the church tower. In the church tower you can see the clock mechanism and a historical painting that *comes to life*, telling stories about the church.

Bruninieku iela 2, Valmiera  
T.+371 64200333  
simanadraudze.lv  
GPS 57.538484, 25.426471

### 4 Valmiera Castle

In the oldest part of the oldtown - in the territory of the castle, Valmiera's oldest wooden building and new, modern architecture coexist. The Museum of Valmiera is located inside the castle walls. In addition to the rich historical collection, there are also conemporary art exhibitions.

The museum's new exhibition *de Woldemar* will take visitors into the story of ancient Valmiera. The history of the medieval town and castle, the world views of the Valmierians of the past, the might of Hanseatic merchants and the skills of craftsmen - all of them meet there. Accompanied by a guide or taking it individually, visitors can go on a tour of the exposition and the old town of Valmiera.

Bruninieku iela 3, Valmiera  
T.+371 26332213, +371 64223620  
valmierasmuzejs.lv  
GPS 57.539184, 25.428053

### 5 Gauja River tram (V-X)

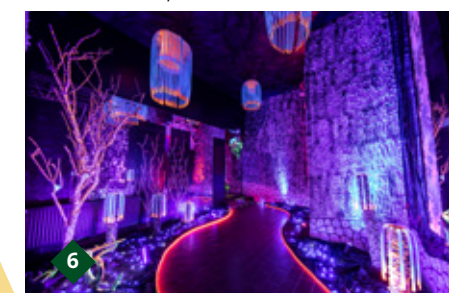
It gives you an opportunity to have a look at the most significant objects of interest in Valmiera from the river. During the 45 minutes long trip the captain (who is also a guide of the tram) will tell the stories and tales about Valmiera. Public and individual rides.

Laivu piestātne, Pilskalna iela 1, Valmiera  
T.+371 27828221  
gaujastramvajs.lv  
GPS 57.538230, 25.427675

### 6 Fantasy land Neonija

The fantasy land *Neonija* is a unique sight-seeing exhibition that brings you into the world of fantasy. It impresses with bird songs, water lizards, unique waterfalls and *dripping* paintings. Neon wall patterns preserve a centuries-old love story, clothed in the unusual magic of art and color magic, allowing any visitor to enjoy it.

Stacijas iela 49, Valmiera  
T.+371 26343399  
neonija.lv  
GPS 57.5235909, 25.4388993





## ◆ TOURISM ATTRACTIONS ◆



7

### 7 The Millpond promenade

For a walk, bike ride, watching rainbow dances in the fountain or for relaxation - *Millpond* in the heart of Valmiera helps to find refreshment for body and mind even on the hottest summer days. The restored promenade of the lake, next to Zilāņu street, with a very special name, will delight the eyes with bright greenery, wooden attractions for children and comfy benches for hearty conversations.

Dzirnavu ezeriņš, Valmiera  
GPS 57.539769, 25.423482

### 8 Cinema Gaisma

The movie theater has room for 152 spectator seats. It is equipped with a world-class sound system un the guests can enjoy the latest movies, that are simultaneously also premiering worldwide, in 2D and 3D.

Rīgas iela 19, Valmiera  
T.+371 64222641  
3dcinema.lv  
GPS 57.537768, 25.417340

### 9 Bachelors park

In 1913 the city received the park as a gift from 8 unmarried gentlemen. The pavilion was built in 1914, saving its former appearance nowadays pavilion has a concert hall and restaurant *Vecpūsis* in it.

L. Paegles iela 10, Valmiera  
koncertzalevalmiera.lv  
GPS 57.536271, 25.417965



11

### 10 Virtual reality game room\*

Wearing virtual reality goggles, you can travel to a different reality and fly like an eagle over the ancient buildings of Paris, fight monsters, ski in high mountains, break out of traps, play basketball and jump from a skyscraper. Individual and team visits.

Garā iela 7, 3rd floor, room 306  
Valmiera  
T.+371 24205244  
GPS 57.536897, 25.414483

### 11 Sport and active recreation park Mežs

The 200 m<sup>2</sup> area can be used for streetball games and other activities. The youngest visitors to the park will enjoy the playgrounds – various types of swings, steps for balance training, a climbing net, a slide, a trampoline and other elements. You can work out in the fitness area, which is equipped with outdoor exercise machines, exercise bars, table tennis and other equipment. On the other hand, for those who are closer to riding a scooter, roller skates, skateboard or bicycle, the 170 m long bicycle track will seem attractive.

Rīgas iela 43A, Valmiera  
GPS 57.536494, 25.409632

### 12 Iron bridge

An object of the industrial heritage. It is a steel bridge over the Gauja River built in 1912. It used to connect the 114 km long *Ainaži-Valmiera-Smiltene* route (quit operating in 1971). A popular spot for walks and part of the *Green Railways* route.

Dzelzs tilts, Valmiera  
GPS 57.528358, 25.408497

### 13 Valmiera swimming pool

Visitors at the *Valmiera Swimming pool* can relax in pools of various sizes, as well as relax in the water recreation area and saunas. The Large swimming pool with 8 swimming lanes is suitable for both adults and children. It is also possible to use the services of the *Sports Health Center*.

Čempionu iela 4, Valmiera  
T.+371 27040012  
valmieraspeldbaseins.lv  
GPS 57.528069, 25.388043



13



16

### 14 Valmiera Olympic center

Location for various sporting events. Multifunctional sports hall, ice rink, public skating and ice-skate rent options.

Čempionu iela 2, Valmiera  
T.+371 20021004  
valmierasoc.lv  
GPS 57.528069, 25.388043

### 15 Valmiera Drama Theatre\*

*Valmiera Drama Theatre* is the only professional theater in the Vidzeme region, whose mission is to create versatile and contemporary theater art for various groups of Latvian society.

Lāčplēša iela 4, Valmiera  
T.+371 64207335  
vdt.lv  
GPS 57.539439, 25.425939

### 16 Children entertainment center Brīnumu mežs

*Brīnumu mežs* is a children's entertainment center indoors, where children's laughter vibrates and imagination knows no bounds. The entertainment center is open in all seasons, providing an opportunity to spend time exciting for children and adults alike, both on a daily basis and on holidays.

Ainažu iela 6, Valmiera  
T.+371 22352717  
brinumumezs.com  
GPS 57.543469, 25.391898

### 17 Adventure company Timemachine\*

*Timemachine* offers a variety of adventure games for large groups, families, groups of friends and individual adventure seekers. An outdoor location search platform is available at *noker.lv*, where you can find various games in Valmiera and the surrounding area. Individual solutions with various activities for large and small. In the summer season (IV-XI), premises for organizing events are available in the Krāču corner *Šķūnis*.

Krāču iela 2, Valmiera  
T.+371 27767876  
timemachine.lv  
GPS 57.533877, 25.429205

### 18 Jāņa Daliņa stadium

The stadium and the track and field arena have been certified by the *International Association of Athletics Federations*. *Conica Conipur SW* surfacing system is used in the stadium and the track and field arena. The stadium has 1,400 seats and 470 in the track and field arena. The stadium also has a hotel with 100 beds, a café, 2 basketball courts and 1 multi-playground. The stadium, outdoor sports fields and children's playground are open to everyone 24 hours a day. Excursions are available.

J. Daliņa iela 2, Valmiera  
T.+371 29900595  
janadalinastadions.lv  
GPS 57.541010, 25.440471



1 18

### 19 Valmiermuiža Castle tower and Valmiermuiža Brewery\*

The tower of Valmiermuiža Castle is the only authentic building left from the former Valmiermuiža Castle. It features Moorish-style wall and ceiling drawings, also used in the famous Alhambra fortress in Spain. The drawings are a state-protected monument of art and history, which is currently not available for viewing. In 2021, the Valmiermuiža tower was included in the list of state protected cultural monuments. Next to it, there is currently a *Valmiermuiža Brewery*, where live beer is made according to the fashion of the landlords. Visualizations of what the luxurious and thorough Valmiermuiža castle probably looked like are located on the adjacent barn terrace. Guided tours and beer tasting are available at the brewery.

Dzirnavu iela 2, Valmiermuiža  
T.+37120264269 (excursions)  
valmiermuiža.lv  
GPS 57.555858, 25.431196

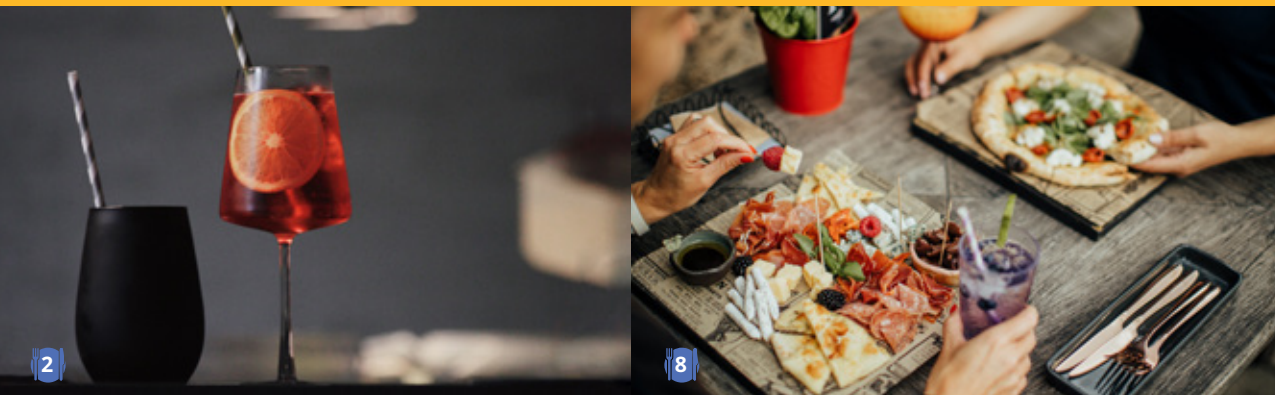
### 20 Valmiermuiža stable\*

Visitors can go on a guided tour of the *Valmiermuiža Stable*. The offer includes horse or pony rides in the park and the surrounding area, as well as it is possible to go by carriage or by sleigh during the winter.

Dzirnavu iela 15, Valmiermuiža  
T.+371 26562703  
valmiermuiža.lv  
GPS 57.558997, 25.425845



## ◆ CATERING ◆



### RESTAURANTS

- 1 **Hotel Wolmar restaurant** *Tērbatas iela 16A*, T. +371 64207304, hotelwolmar.lv
- 2 **Akustika** *Diakonāta iela 6*, T. +371 26660202, akustikavalmiera.lv
- 3 **Rātes vārti** *Lāčplēša iela 1*, T. +371 26336259, ratesvarti.lv
- 4 **Vecpuišis L. Paegles iela 10, T. +371 28033933, vecpuišis.lv**
- 5 **Delizia K. Baumaņa iela 9, T. +371 20249023, delizia.mozello.lv**
- 6 **Valmiermuiža beer kitchen and terrace (V-X)** *Dzirnavu iela 2, Valmiermuiža*, T. +371 28664424, valmiermuiža.lv

### CAFES, BISTROS AND PIZZERIAS

- 7 **Ahh-meat** *Rīgas iela 37*, T. +371 22816282
- 8 **Vīnkalni pizzeria** *Bruņinieku iela 4*, T. +371 25543123
- 9 **Tērbata** *Tērbatas iela 2*, T. +371 20020576
- 10 **Jauna Saule** *Rīgas iela 10*, T. +371 26107189
- 11 **Bastions** *Bastiona iela 24*, T. +371 26399665
- 12 **Rimants** *Miera iela 3A*, T. +371 27322397
- 13 **Bistro 1:1 J. Daliņa iela 2 un Čempionu iela 4, T. +37128334973**
- 14 **Pasēdnīca** *Rīgas iela 36*
- 15 **Alus bārs** *Strauta iela 1*, T. +371 29941064, alusbars.lv
- 16 **Valdeko** *Dzirnavu iela 2, Valmiermuiža*, T. +371 26419451, valdeko.lv
- 17 **Lāči** *Rīgas iela 4*, T. +371 25421805, laci.lv
- 18 **Pizza factory OZO** *Nameja aleja 1, Valmiermuiža*, T. +371 20036876
- 19 **Strops** *Stacijas iela 57*, T. +371 25554777, stropapicas.lv
- 20 **Čili Pizza G. Apiņa iela 10A, T. +371 64228558, cilipizza.lv**
- 21 **La Pizza Veloce** *Rīgas iela 45*, T. +371 20009119, atrapica.lv
- 22 **La Pizza Veloce Pica & Kebab J. Endzelīna 1, T. +371 27741555, atrapica.lv**
- 23 **Hesburger** *Rīgas iela 4*, T. +371 26420417, *Rīgas iela 63*, T. +371 20240274, hesburger.lv

## ◆ ACCOMMODATION ◆

### HOTELS

- 1 **Wolmar\*\*\*\*** *Tērbatas iela 16A*, T. +371 64207301, hotelwolmar.lv
- 2 **Sports Hotel\*\*\*** *Vaidavas iela 15*, T. +371 25464433, sportshotel.lv
- 3 **Stadium Hotel J. Daliņa iela 2, T. +371 29900595, janadalinastadions.lv**
- 4 **O.K. Hotel Cempu iela 8B, T. +371 28605455**
- 5 **Students hotel of the Valmiera vocational school** *Vadu iela 3*, T. +371 26672425, valmierastehnikums.lv

### GUEST AND HOLIDAY HOUSES

- 6 **Villa Buta** *Baltā iela 6*, T. +371 22020071
- 7 **Rātes** *Valmiermuiža*, T. +371 29334461, +371 29247248, atputarates.lv

### APARTMENTS

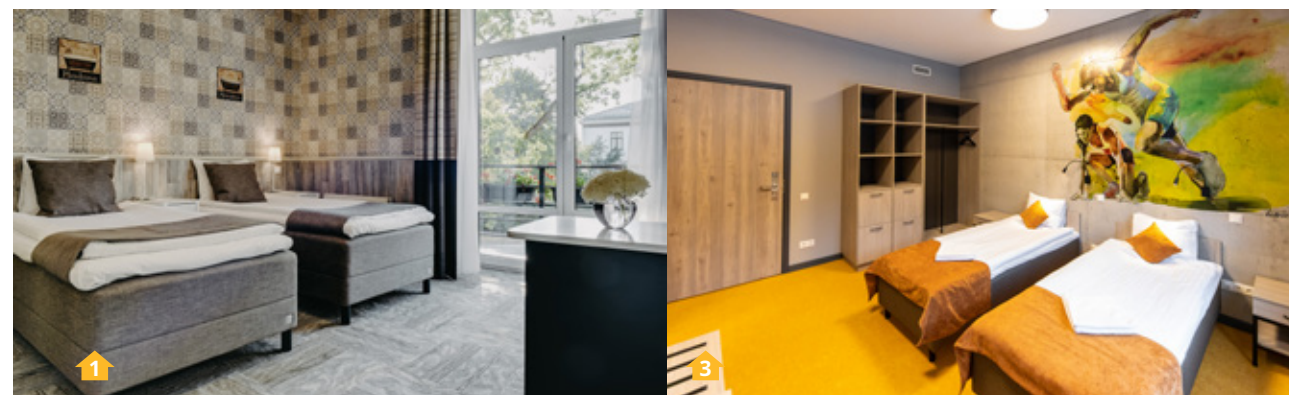
- 8 **Baumanis K. Baumaņa iela 5, T. +371 29191086**
- 9 **Rumido Suite A. Upīša iela 37, T. +371 27700868**
- 10 **RIGA street Apartment 54** *Rīgas iela 54*, T. +371 29166124
- 11 **Rīgas ielas 20 Apartaments** *Rīgas iela 20*, T. +371 29487711
- 12 **Gaujas ielas apartaments** *Gaujas iela 11*, T. +371 29451234, burtakas.lv
- 13 **Timemachine apartment** *Krāču iela 2*, T. +371 27767876, timemachine.lv

### HOSTELS

- 14 **Hostel Hanza** *Miera iela 3A*, T. +371 28626095
- 15 **Vidzeme University of Applied Sciences hostel (VII-VIII)** *Ausekļa iela 25A*, T. +371 26651033, va.lv
- 16 **Valmiera Gauja bank secondary school - Development center (VII-VIII)** *L. Paegles iela 20 un 5/7*, T. +371 26102412
- 17 **Hostel in J.Enkmaņa street** *J. Enkmaņa iela 14*, T. +371 29158538
- 18 **Hostel in Ausekļa street** *Ausekļa iela 25C*, T. +371 29158538

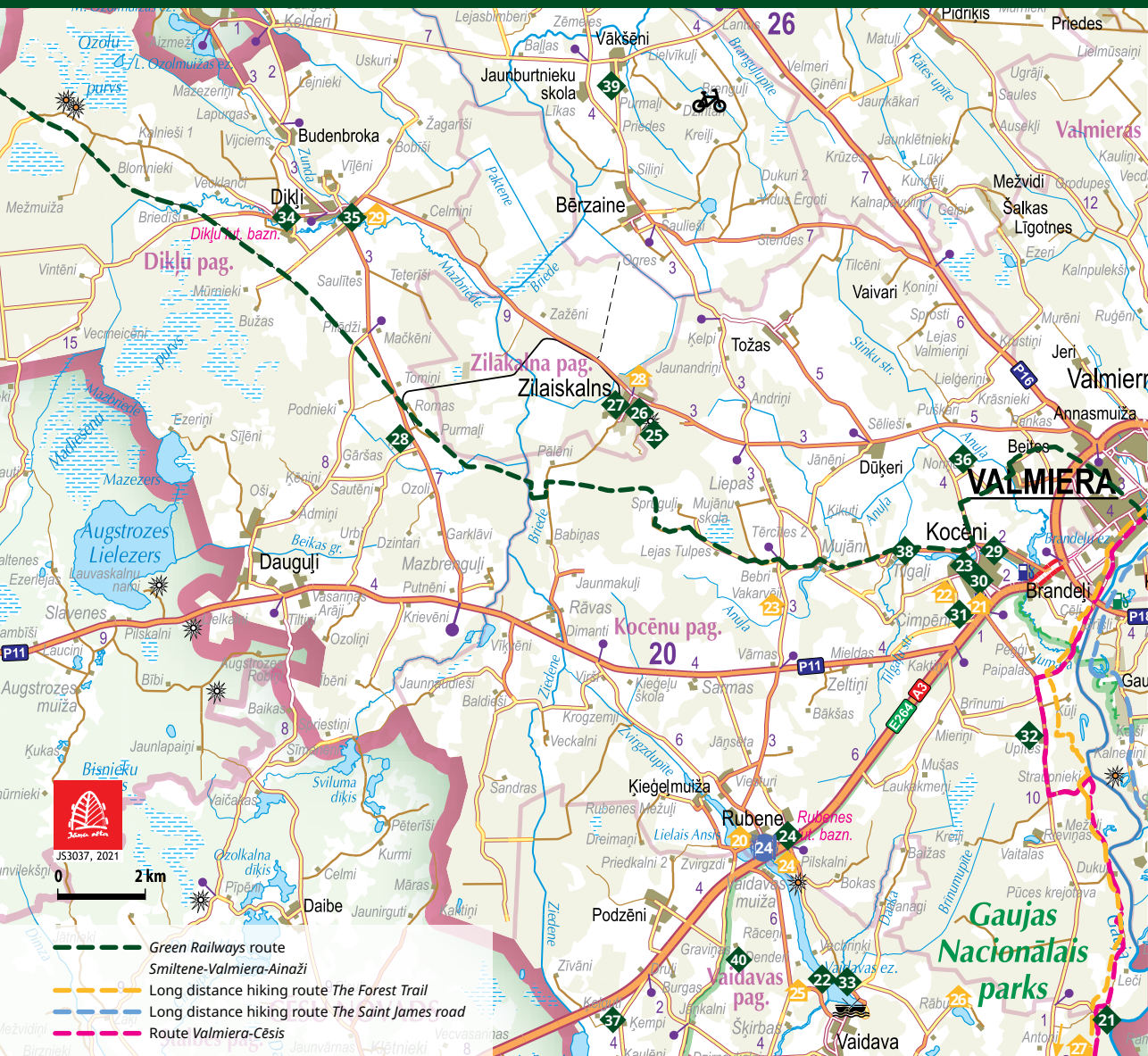
### KEMPINGI

- 19 **Urban glamping Šķūņaugša (V-IX)** *Krāču iela 2*, T. +371 27767876, timemachine.lv





## ◆ KOCĒNI ◆



## ◆ TOURISM ATTRACTIONS ◆

### 21 Sietņiezis

The biggest white sandstone outcrop in Baltics – 15 m high and 400 m wide. In the sun it warms up and keeps warmth, hence, wild bees have chosen it as their home, creating the unique honeycomb in the walls of the outcrop. There is a well-established nature trail with several viewing platforms. Places for picnic are available.

Vaidavas pag.  
GPS 57.428529, 25.386489

### 22 Lake Vaidava

One of the most popular leisure spots for locals and visitors. At the beach of Vaidava lake there's a visitor-friendly place of leisure and picnics, WCs, a volleyball court and a playground specially suited for children.

Vaidava, GPS 57.433372, 25.284334

### 23 Kokmuiža Manor complex

The neo-baroque manor was built in the 19th century and rebuilt in mid 1930s for the needs of the Kocēni primary school. Next to it is a sport and culture hall. Guest-friendly part of the castle, in the middle of which lies the only publicly available spherical sun clock in Latvia.

Alejas iela 2, Kocēni  
GPS 57.522826, 25.334523

### 24 Rubene Church\*

The church is built in the 13th century. Initially it was a wooden church, but it got its current looks in 1739. Several significant art pieces of national significance, e.g., a painted pulpit and a goblet, can be found there. The church was founded by priest Indriķis (Henry of Latvia), who is also the author of the Chronicle of Henry of Livonia. The church has an interactive exhibition about Henry of Livonia and the history of the church, which can be viewed by prior arrangement.

Rubene, T.+371 29723322 (excursions)  
GPS 57.468271, 25.266233

### 25 Zilaikalns

127 m high Zilaikalns is an ancient holy site, a medieval cemetery and a nature reserve. By the entrance the ancient sacrificial stone has been placed. Informative stands and benches available. At the foot of Zilaikalns lies the Zilaikalns cultural historic and visitors centre.

Zilaikalns  
GPS 57.553457, 25.216256

### 26 Zilaikalns cultural history and visitors center ZTornis

Visitor center is located at the foot of Zilaikalns, in the premises of an ancient water tower and a modern annex. In the center visitors can see the historical exposition dedicated to the nature object and sacred place *Zilaikalns*, Zilaikalns village, industrial heritage object - water tower. Visitors have the opportunity to ascend above Zilaikalns and with the help of virtual reality can explore the historic narrow gauge railway locomotive.

Parka iela 2, Zilaikalns  
T.+371 26122943  
GPS 57.557252, 25.215495

### 27 Rail bicycles ZRailbikes (V-X)\*

Rail bicycles are a way of transportation along the narrow-gauge railway branch from Zilaikalns village to the peat bog. The total length of the route is ~4km, which can be done in about half an hour. The bicycle has room for four people - two operate the pedals and two sit in the passenger seat. Currently there are four such bicycles available; 16 people can go on the trip at the same time. Each bicycle can be fitted with 2 child seats.

Zilaikalns  
T.+371 26122943  
GPS 57.5577305, 25.2044398

### 28 Mini Zoo Mežiņi

*Mežiņi* is a farm of rural crafts and animals. Here everyone can see, feed and hug a wide variety of pets and birds. The workshop lets visitors to find out more about the extraction and processing of Angora rabbit wool, it's possible to buy yarns and knitwear from farmed sheep, rabbit, alpaca and dog wool.

*Mežiņi*, Dikļu pag.  
T.+371 29198221  
mezini.lv  
GPS 57.547599, 25.117332

### 29 Guest room Sudrabkalni\*

The hostess of the guest room *Sudrabkalni* welcomes guests and offers a variety of creative master classes, such as crown and bird cage making, for individual travelers and groups. Included in the offer are also thematic events for different occasions.

*Sudrabkalni*, Kocēni  
T.+371 29663493  
GPS 57.525320, 25.334740

### 30 Horse farm Kocēni\*

Horse farm offers not only to learn to ride, go horseback riding, ride in a carriage, but also to seriously engage in equestrian sports and buy a horse suitable for their wishes. It is possible to organize events for groups or use offers for groups of travelers - see stables, ride in the area or arena or ride in a horse-drawn carriage..

*Astras*, Kocēnu pag.  
T.+371 26405147  
zirgaudzetavakoceni.lv  
GPS 57.519129, 25.335739





## ◆ TOURISM ATTRACTIONS ◆

### 31 Beste tennis courts\*

Indoor tennis court with high-quality artificial grass cover and heating even in cold weather. The courts will delight both long-term tennis enthusiasts as well as anyone who wants to try their hand at new skills. It is possible to book coaching lessons by applying in advance. At certain times, the courts are available to every player from the age of 5.

Bērzu iela 1, Kocēni  
T.+371 26428639  
GPS 57.514972, 25.342147

### 32 Winery Matilde\*

Discover the secrets of home wine production and how, by adding various weeds, for example, peppermint infusions, vermouth is being made. *Matilde* wines are thick and rich in flavour due to the plants, berries and fruit gathered in the near vicinity. Wine degustation and a possibility to buy these products. Wine tasting, purchasing products and making your own unique wine at the *Wine Lab*.

Bilderī, Kocēnu pag.  
T.+371 26457057 (WhatsApp)  
GPS 57.483838, 25.362767

### 33 Factory VAIDAVA CERAMICS\*

A family company that has since 1980 been producing beautiful and functional design dishes from the oldest clay on planet Earth - Devonian clay. Going on an individual or group

tour of the factory, guests can get to know the preparation of the clay mass, the shaping of vessels, glazing and firing. During the visit guests can ask questions not only to the tour guide, but also to the craftsmen who have been practicing their craft for decades. A factory store with a full range of products is available for guests.

Ezera iela 2, Vaidava  
T.+371 22334806  
vaidava.lv  
GPS 57.430930, 25.288637

### 34 Neikenkalns and open-air concert hall

The place where one of the most admired Latvian folk traditions has started – the Song and Dance Festival, currently there is the beautiful *Neikenkalns open-air concert hall*, where you can feel the unique aura of nature and cultural history. Here you can also see impressive environmental objects – *in the crown of the Silver Grove* there is a *Sound Grove*, where both children and adults can make music and get to know the sounds on the xylophone, metallophone, wind instruments and bells.

Dikļi  
GPS 57.5943290, 25.0811176

### 35 Dikļi Palace\*

First evidence of the Dikļi Manor dates back to the 15th century. It is a monument of cultural heritage, where visitors can have a look on historical furniture and fire-places,

as well as enjoy unique paintings by Latvian artists. The special atmosphere and the attentive staff will make everyone feel special.

Dikļi  
T.+371 26515445  
diklupils.lv  
GPS 57.597894, 25.102335

### 36 Berga wines\*

Small family factory produces wines, sparkling wines, ciders and soft drinks, the quality of which has been repeatedly praised in Latvian and Baltic fruit and berry wine competitions, winning first places in certain categories for several years in a row.

While visiting here, the host will tell you about the wine and cider production process, as well as offer to taste them.

Prīmenes, Kocēnu pag.  
T.+371 26647052  
GPS 57.537074, 25.336205

### 37 Barrel Museum\*

Here you can look at oak barrels and the tools of ancient coopers, as well as take part in the creation of barrels with master Jānis, discovering the secrets of their making. The owners of the museum are honoured to maintain the label *Latvian heritage* because all the ancient craftsmen tools and methods are used in the process of making barrels.

Madaras, Vaidavas pag.  
T.+371 29268692  
muca.lv  
GPS 57.432090, 25.203687

### 38 The Peonies of Silezers (V-VII)\*

The flower garden *Silezeru peonijas* is located just a 10 minute drive away from Valmiera. Here you can see about 850 different varieties of peonies. Hostess Sandra will tell you useful tips and facts about growing and caring for flowers. During the blossoming of peony flowers, the garden will be a great place for a beautiful photo shoot.

Silezeri, Kocēni  
T.+371 29115262, +371 29453057  
GPS 57.523270, 25.321362

### 39 Paintball Valmiera\*

20 km from Valmiera, it is possible to get adventurous emotions on the paintball field by playing various game scenarios accompanied by professional game managers with military experience. After the game take the chance to relax at the resting place *Brīvēznieki*.

Jaunozoli, Bērzaines pag.  
T.+371 27700772  
GPS 57.620026, 25.206136

### 40 Silkalni (V-IX)\*

In the farm *Silkalni*, located at the *Gauja National Park*, it is possible to get to know various medicinal plants, participate in the collection process and learn to use them to improve health, as well as in the daily diet. During the visit, the hostess Zeltīte Kaviere offers to taste teas, syrups and tinctures.

Silkalni, Vaidavas pag., T.+371 29432176  
GPS 57.438930, 25.241965

## ◆ CATERING ◆

24 **Mazais Ansis** *Ansiši, Kocēnu pag.*, T. +371 29134890, mazais-ansis.lv  
GPS 57.464752, 25.256469

## ◆ ACCOMMODATION ◆

20 **Mazais Ansis** *Ansiši, Kocēnu pag.*, T. +371 29134890  
mazais-ansis.lv, GPS 57.464752, 25.256469

21 **Bestes apartments** *Bērzu iela 5, Kocēni*, T. +371 26428639  
GPS 57.514977, 25.342138

22 **Kocēnu Sports hall** *Alejas iela 4, Kocēni*, T. +371 29431736  
GPS 57.522051, 25.335201

23 **Vakarvēji** *Kocēnu pag.*, T. +371 29250836, vakarveji.lv  
GPS 57.515288, 25.261567

24 **Pilskalni** *Kocēnu pag.*, T. +371 29299268  
GPS 57.461244, 25.269001

25 **Meldri** *Vaidavas pag.*, T. +371 26483015  
GPS 57.434155, 25.269904

26 **Leimaņi** *Vaidavas pag.*, T. +371 26604673  
GPS 57.429783, 25.334583

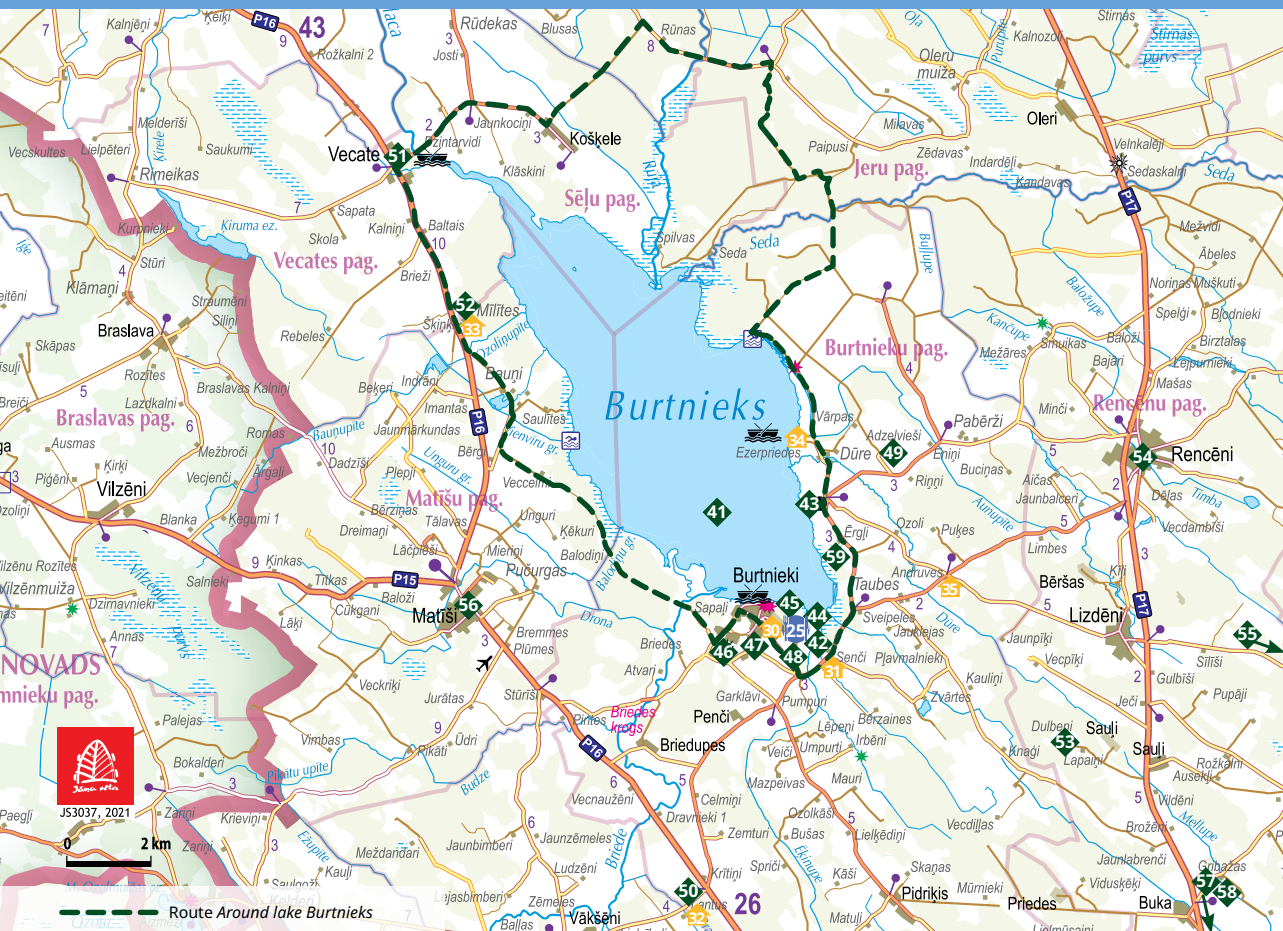
27 **Caunītes (V-X)** *Vaidavas pag.*, T. +371 29408146, baili.lv  
GPS 57.464752, 25.256469

28 **Guest house Zilaiskalns** *Valmieras iela 4, Zilaiskalns*  
T. +371 27874768, GPS 57.559331, 25.210571

29 **Mežurgas** *Dikļu pag.*, T. +371 26555136  
GPS 57.596540, 25.105651







45

#### 41 Lake Burtnieks

The fourth largest lake in Latvia. The average depth of the lake is 2.4 m, the deepest places - 4.5 m. The lake is home to more than 20 species of fish. Licensed fishing allowed. The landscape of *Lake Burtnieku* with churches and manor centers is recognized among the 10 most important landscapes in Vidzeme. In Burtnieku village you can see the historical manor buildings,

on the steep bank near Burtnieku church - sandstone outcrops. Boat rental, recreational trips on the lake. Swimming areas, 2 landscape observation towers and a cycling route around the lake.

Burtnieka ezers  
GPS 57.6988656, 25.2766008

#### 42 Burtnieki Manor park

The park was started by the Schröder

family around 1860 and is a national nature conservation site. There are large stairs in the park, their steps are made of one-piece, Finnish granite, specially brought to Latvia (each step is 4.3 m long). There are 70 species of trees and shrubs in the park. There is a stage and two linden alleys in the territory of the park - *Love and Sigh Alleys*.

Burtnieki  
GPS 57.6975809, 25.2775272

#### 43 Burtnieki Church and the rectory

One of the most notable examples of late Gothic and Baroque in Vidzeme. The stone church was built between 1283 and 1287 and is dedicated to St. Mary. 1654 the church suffered a fire, but was completely restored. The church books in the clergy house contain records of people's birth data from 1720.

Burtnieku pag.  
T.+371 26479451  
GPS 57.7196701, 25.3007286

#### 44 The Visrags Nature Trail

The *Visrags Nature Trail* has been established in the nature reserve Burtnieku ezera pļavas. It starts at the *Silver Gate* of the Burtnieki Manor Park, leading through the park to the floodplain meadows of *lake Burtnieks* and *Ēķinupe*, which is an internationally important nesting place for protected birds. One of the stops on the trail is the viewing tower, from which you can see the floodplain meadows and the south-eastern shore of the lake, where the tower of the stately Burtnieki church stands.

Burtnieki  
GPS 57.698035, 25.276864

#### 45 Cruise ride on the pontoon boat Made Marija (V-X)\*

Take an unforgettable trip on *lake Burtnieks* by boat. For private trips, by agreement, the offer includes snacks and grilled zander from

the *lake Burtnieks*, themed boat decorations for a photo session and other activities. It can accommodate up to 15 people at a time. Group trips must be booked in advance.

*Burtnieku centra laivu kanāls*, Burtnieki  
T.+371 29456900, +371 29214318  
GPS 57.698294, 25.269663

#### 46 Kalndzirnavas\*

In 1814, a Dutch-style heavy-duty windmill was built. A lookout point and information about the history of the windmill and the surrounding landscape have been created at the mill.

*Kalndzirnavas*, Burtnieku pag.  
T.+371 29391593  
kalndzirnavas.lv  
GPS 57.688672, 25.260352

#### 47 Horse farm in Burtnieki\*

The oldest and the largest stud farm in Latvia, which has been operating continuously for more than 70 years. The stud farm has about 200 horses that graze in the scenic nature reserve meadows on the shores of *lake Burtnieks* and its surroundings. Groups of travelers can go on a tour of the stud farm and try or develop their riding skills outdoors or in an arena. It is possible to rent a horse for photo sessions. The stud farm has also the largest library of horse breeding books in the Baltic States.

J. Vintēna iela 13, Burtnieki  
T.+371 27840096 (excursions)  
GPS 57.693368, 25.273454

#### 48 Zenta Skrastiņa's garden (V-IX)\*

The magnificent garden, located near *lake Burtnieks*, is the life's work of the gardener Zenta Skrastiņa. In the course of her work, the landscape gardener has designed many Latvian gardens. The garden, with its wide variety and splendor, is surrounded by a unique oak grove in the middle of the garden. During the tour, learn about the positive effects of plants on human health, find inspiration for landscaping your garden and have a good time while conversing about the power of plants.

Jaunatnes iela 23, Burtnieki  
T.+371 28606721, +371 27830800  
GPS 57.692484, 25.279318

#### 49 Hemp farm Adzelvieši\*

Hemp is grown on a large area in the farm fields, from the seeds of which, according to an old cooking tradition, hemp relish is made. During your visit to the farm you will learn more about the hemp cultivation, as well as see historical instruments used for hemp growing. At the end of the excursion and masterclass, the owners will offer various hemp products for degustation.

*Adzelvieši*, Burtnieku pag.  
T.+371 29253507  
adzelviesi.lv  
GPS 57.732352, 25.329311

41

49



## ◆ TOURISM ATTRACTIONS ◆

### 50 Cottage Lantus\*

Offers various SPA procedures, massages and sauna rituals. One can enjoy the beauty of the stars while sitting in a hot tub. Accommodation in cosy rooms available. It is possible to organize celebrations with delicious meals and country elegance for both a small number of guests in the sauna house and a larger number in the *Lantus shed*.

*Lantus*, Bērzaines pag.  
T.+371 29214406  
laukumaja.lv  
GPS 57.632156, 25.242901

### 51 Ezerupe

*Ezerupe* is a beautiful leisure location by the river's Salaca source of *lake Burtņieks*, where you can enjoy wonderful views of nature, go fishing, take a lazy ride on the river or lake or spend the night on the lake's shore. The offer includes two well-equipped 5-bed rooms, a six-bed and a double caravan and a *floating sauna* with a tub.

Laivu bāze *Ezerupe*, Vecates pag.  
T.+371 25660000  
GPS 57.795854, 25.145496

### 52 Bath house Stārķu ligzda\*

Very close to the largest White Stork colony in the Baltics is a cozy bath house *Stārķu ligzda*. In the cottage you can not only spend the night, but also enjoy a sauna, an outdoor hot tub and various SPA treatments. On the ground floor there is a small

lounge with a fireplace, where you can sit comfortably with a small group of friends or find romance for two.

*Rozītes*, Matīšu pag.  
T.+371 26619181  
pirtsnamins.lv  
GPS 57.760347, 25.160846

### 53 Dulbeņi (V-X)\*

The *Dulbeņi* farm is one of the few places in Latvia where *Shiitake mushrooms* are grown in a natural, biologically clean environment. During the tour, the hostess will tell you about the healing properties of the mushrooms, the patient growing process, share delicious recipes for making mushrooms, as well offer to taste them in their freshest form.

*Dulbeņi*, Rencēnu pag.  
T.+3712 9165986  
GPS 57.667835, 25.399925

### 54 Nursery Zaļā oāze (IV-XI)\*

A family company with more than 20 years of experience – *Zaļā oāze* – is not only a nursery, but also a place to give joy to the soul, to gain energy and to delight the eyes. Every visitor here can find the most suitable plants, ecologically clean vegetables and fruits, combining it with admiring the variety and splendor of plants. Guided tours are available.

Pumpura iela 1A, Rencēni  
zalaoaze.weebly.com  
T.+371 26126898  
GPS 57.725709, 25.430582

### 55 Ēvele Church

The church, built in the 19th century, is notable for its loud organ. The church is a well-preserved example of the architecture of classicist sacred buildings in Vidzeme. During the summer season, you can climb the church tower and view the interior at any time.

*Kesterleja*, Ēvele  
T.+371 26454301  
GPS 57.693101, 25.555821

### 56 St. Matthew Church\*

The church is located in the center of Matīši, built in the 1780s. The portal of the church is decorated with the monogram of King Karl XII of Sweden. Church also displays a pulpit and an altar that were made at the end of 17th century.

Valmieras iela 3, Matīši  
T.+371 26199854 (excursions)  
GPS 57.699850, 25.159762

### 57 Children's car town

In the active recreation park *Avoti*, a heated 350 m<sup>2</sup> hall is equipped with a children's car town, where children can have fun and learn new skills, sitting at the wheel of an electric car, tractor or excavator. At the car town children can get a feel for the flow of car transport and get to know road signs. It is possible to use the children's car town individually and in groups, as

well as organize children's parties.

*Jaunavoti*, Valmiermuiža  
T.+371 25104600, +371 29499342  
avoti.com  
GPS 57.555754, 25.443355

### 58 Golf course Avoti

In Valmiermuiža, there is a world-standard 9-hole golf course *Avoti*. The length of the area is 1937 m and its landscape consists of birch groves, trees, shrubs, decorative greenery, six water reservoirs and 15 sand bunkers. Adjacent to the golf course is a driving range, a golf clubhouse, a golf shop and a golf simulator. Equipment rental is available.

*Avoti*, Valmiermuiža  
T.+371 25770024, +371 29499342  
avoti.com  
GPS 57.556882, 25.443989

### 59 Steep shore trail of lake Burtņieks

The less than 1 km long circular nature trail is located in the *Lake Burtņieks Meadows Nature Reserve*. The trail starts at the Burtņieki Old Cemetery and continues along the meadows of the lake's floodplains, offering a view of beautiful landscapes of the legendary lake and the steep shore sandstone outcrops – the only outcrops of this type in Latvia, which were formed as a result of the erosion by the lake's waves.

Burtņieku pag.  
(next to the Burtņieku Old Cemetery)  
GPS 57.713841, 25.302471



## ◆ CATERING ◆

25 **Burtņiekkrasts Jāņa Vintēna iela 10, Burtņieki**, T. +371 26300430  
GPS 57.696313, 25.274832

## ◆ ACCOMMODATION ◆

30 **Burtņiekkrasts Jāņa Vintēna iela 10, Burtņieki**, T. +371 26300430  
GPS 57.696313, 25.274832

31 **Atpūtas namiņš Lāčplēša iela 3A, Burtņieki**, T. +371 29121375  
atputasnamins.lv, GPS 57.693506, 25.281083

32 **Lantus Bērzaines pag.**, T. +371 29214406, laukumaja.lv  
GPS 57.632997, 25.242386

33 **Bath House Stārķu ligzda Rozītes, Matīšu pag.**, T. +371 26619181  
pirtsnamins.lv, GPS 57.760347, 25.160846

34 **Ezerpriedes Burtņieku pag.**, T. +371 29461455, ezerpriedes.lv  
GPS 57.732728, 25.292900

35 **Recreational complex Rīts Andruves, Burtņieku pag.**, T. +371 26639530  
GPS 57.703987, 25.350720







**60 Skaņaiskalns Nature park**

*Skaņaiskalns Nature park* is a 3 km long trail that covers the most beautiful section of the Salaca ancient valley with sandstone outcrops, caves, springs and a pine forest. Going along the trail, you can see such unusual natural formations as Werewolf Pine, Devil's Stone, Angel's Cave, Dream Stairs, Devil's Cave, Skābumbalļu, Dwarf Trail, Neļķu Cliffs, Devil's Pulpit and Skaņaiskalns.

Parka iela 36, Mazsalaca  
T.+371 26429500  
skanaiskalns.eu  
GPS 57.8631130, 25.0274766

**61 Valtenbergi Manor complex**

In the center of the ensemble's composition is a manor - a castle built in 1780 on the initiative of the owner of the manor, Wilhelm Georg von Falkerzham. The first information about the manor can be found in 1528, when it was managed by Baron Falkenberg, from whose name the manor derives its Latvian name - *Valtenbergi Manor*. There has been a school here for a long time, but now the Mazsalaca museum is located on the 1st floor, where various

expositions can be seen. Guided tours of the museum and manor complex by prior arrangement.

Parka iela 31, Mazsalaca  
T.+371 26519165 (excursions)  
GPS 57.862438, 25.036565

**62 Museum of Mazsalaca**

The Museum of Mazsalaca is located in the old Valtenberg Manor House. While visiting here, you will be able to see unique exhibits: a bell collection, Walter Hirtte's collection of wooden sculptures, hunting trophies, an exhibition of ancient family trees and a collection of 1,300 souvenir mice. Walking through the park, feel the charming atmosphere of the manor - next to the manor house there are two regular baroque gardens created at different times, which further into the 19th century landscape forest park along the banks of the Salaca river.

Parka iela 31, Mazsalaca  
T.+371 26519165  
GPS 57.862438, 25.036565



**63 Dauģēni Nature trail**

*Dauģēni Nature trail* is one of the longest landscaped nature trails in Latvia. Its length in one direction is about 10 km. Here you can enjoy the glorious landscapes of the ancient Salaca valley with red mid-Devonian sandstone outcrops, set-aside meadows and streams, as well as see nature in its silence, peace and pristine.

By the leisure place *Puņmutes*  
Ramatas pag.  
GPS 57.925667, 24.972630

**64 Vidusmežu ceramics\***

*Vidusmeži* is a home, a brand and a space for creative expression, where high quality pottery is created with the character and added value provided by the natural treasures of the Salaca valley. Firewood and ceramic products fired in an electric oven are made by hand, inspired by natural tones and patterns. In *Vidusmeži* it is possible to creatively participate in the process of creating pottery.

*Vidusmeži*, Skakalnes pag.  
T.+371 25908703  
GPS 57.899213, 24.938406



## ◆ TOURISM ATTRACTIONS ◆

### 65 Lamb Club\*

The *Lamb Club* is a farm located less than 4 km from Mazsalaca. It will be interesting both for families with children and for larger groups of colleagues or friends. The sheep live here in a real club and they are being watched by a real shepherd dog. During the visit, you can both hug and feed the newborn lambs with a bottle of milk, take photos, as well as watch the sheep in their daily lives from the visitors' balcony or in nature. The best time to visit is from March to May, when the young lambs are born.

Keīki, Skaņkalnes pag.  
T.+371 22144936  
jeruklubs.lv  
GPS 57.828404, 25.064586

### 66 Team building event Gani aitu\*

The team building event *Gani aitu* (*Herd the sheep*) is a different, never before held event in Latvia, which allows its participants to discover new aspects of themselves, get to know their teammates in non-standard situations and gain a sense of community in the open air. During the event the team must unite to reach a common goal by completing set challenges. The event is perfect for various teams, families and companies of friends.

Rantiņi, Skaņkalnes pag.  
T.+371 29395635  
GPS 57.896369, 25.008954

### 67 Sēļi Manor complex

The old manor park with a pond and the *Island of Love* encourages us to dream about the life of the manor, which in ancient times was associated not only with economic activity, but also with the cultural life corresponding to the era. In the buildings of the *Sēļi Manor complex* you can see a historical exposition about Sēļi and the surrounding manors, a unique collection of porcelain figurines, as well as other professional and amateur art exhibitions.

Sēļu muiža, Sēļi  
GPS 57.8513856, 25.212949

### 68 HI veltes\*

The owners of the family company *HI veltes* Inga and Harijs, by carefully processing fruit and berries grown in the Salaca river valley, turn them into delicious wines. During the visit, in the yard of the winery, the owners will tell you about the home-made wine-making process, the taste and color nuances of the wine, as well as give them a tasty snack. You will be able to participate by filling and capping the wine bottle and creating your own design label. You can then buy your own wine. Off-site tastings and wine delivery on offer.

Salacas, Skaņkalnes pag.  
T.+371 22027471  
GPS 57.852514, 25.054579

### 69 Farm Dzintari\*

In the *Dzintari* farm you can see old Soviet-era cars and other vehicles that are rare today. There will be something to see and hear here, as the attractive host will answer all your interesting questions and tell stories about the vehicles here, making the tour more exciting.

Dzintari, Skaņkalnes pag.  
T.+371 29459618  
GPS 57.843011, 25.043400

### 70 Libyan Castle Mound and open-air stage

An ancient Libyan Castle Mound inhabited in the late Iron Age. In ancient times, a stately Libyan wooden castle stood here. Throughout history the castle mound has also been called Ogļu hill and Skulberģu (Kolbergas) castle mound. The castle mound is located in a scenic location, surrounded by Salaca river on one side and Damjupīte river on the other. Nowadays, there is an open-air stage at the top of the castle mound, which gathers people for merry summer balls. Beautiful walking trails wind along the stage, leading to the nearby *Valtenberģu Manor*, Bezdelīgu Cliff and *Dauģēnu Nature Trail*.

Libiešu pilskalns, Skaņkalne  
GPS 57.859558, 25.032097

### 71 Mazsalaca Crafts House\*

Opposite the old Āža pub is a place



where creativity and craftsmanship go hand in hand. The crafts house promotes and improves the values of the intangible cultural heritage in the skill of making patterned double gloves, weaving on a loom and ceramics. Those interested can learn the method of making specially knitted double-knitted gloves, meet local handicraft masters and from time to time visit various exhibitions curated by artisans.

Rīgas iela 10, Mazsalaca  
T.+371 29179179  
GPS 57.857397, 25.054644

### 72 Pedestrian bridge over Salaca river

A cable-stayed bridge crossing the Salaca river, a favorite of boaters. The bridge connects Mazsalaca with Skaņkalne, the Valtenberģu Manor complex with the Libyan open-air stage. The bridge is like a gate to the treasures of the Salacas river such as sandstone rocks, it experiences the dance steps of summer ball visitors and sled pullers in the winter. A great checkpoint for walks.

Skaņkalne  
GPS 57.860623, 25.035635

## ◆ CATERING ◆

26 Būda Rīgas iela 16, Mazsalaca, T. +371 27746538, ediendaris.lv  
GPS 57.857437, 25.052756

27 Miks Pērnavas iela 5, Mazsalaca, T. +371 64251959, miksmazsalaca.lv  
GPS 57.861294, 25.054508

## ◆ ACCOMMODATION ◆

36 Miks Pērnavas iela 5, Mazsalaca, T. +371 64251959, miksmazsalaca.lv  
GPS 57.861294, 25.054508

37 Salisburg residence Pērnavas iela 7-8, Mazsalaca, T. +371 26685222  
GPS 57.861686, 25.054128

38 Mazsalaca Baptist Church Lielā iela 5, Mazsalaca, T. +371 29122850  
GPS 57.864027, 25.056498

39 Vači (V-IX) Skaņkalnes pag., T. +371 20169259, ediendaris.lv  
GPS 57.871076, 24.941196

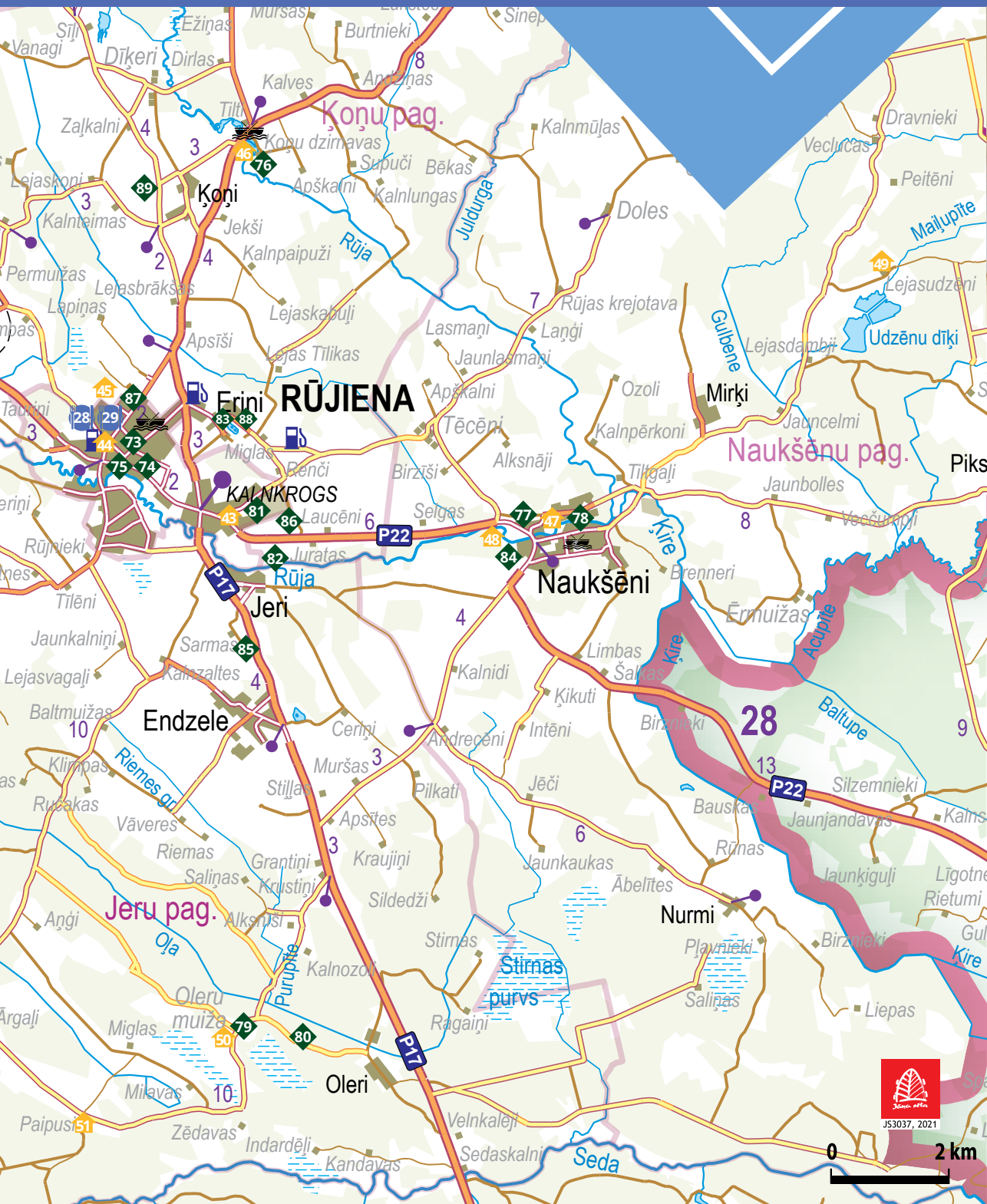
40 A night in the forest - Tents in the trees (V-IX) Rantiņi, Skaņkalnes pag.  
T. +371 29395635, GPS 57.896369, 25.008954

41 Jaunbomji Skaņkalnes pag., T. +371 26464138  
GPS 57.840811, 25.059741

42 Lamb Club glamping (IV-X) Keīki, Skaņkalnes pag., T. +371 22144936  
jeruklubs.lv, GPS 57.828404, 25.064586







**73 Rūjiena Exposition hall and the Japan room**

Only works by Rūjiena residents or artists related to Rūjiena can be seen in the exhibition hall. In one of the rooms of the exhibition hall you can see portraits of famous film actors drawn by Jānis Vaivars with autographs obtained by himself. A total of 109 actors were drawn. Here you can also see the wooden Lielvārde belt made by the students of Rūjiena Art School. The *Japanese room* features gifts from Japanese friends.

Upes iela 7, Rūjiena  
T.+371 26381413  
GPS 57.895848, 25.325675

**74 Rūjienas saldējums\***

The *Rūjienas Saldējums* producers are also called *cloud pushers*. Probably that's why the ice cream made here tastes so delicious. When visiting the factory, you will be able to participate in the preparation of ice cream, taste the diverse tastes of the famous *Rūjienas Saldējums*, watch the production processes through a video film and learn interesting stories.

Upes iela 5, Rūjiena  
T.+371 29403494  
GPS 57.895925, 25.327123

**75 The floodplain trail of the river Rūja**

The circular trail winds along the bank of the Rūja River for about 2

km and is perfect for leisurely nature watchers. During the walk you will be able to see the shores rich in old rivers. In terms of biodiversity, the area is part of the *North Vidzeme Biosphere Reserve*.

Valdemāra iela 12, Rūjiena  
GPS 57.893197, 25.325801

**76 Ķoņi mill\***

The only place in Latvia where grain and spun wool, blankets, pillows and various handicrafts are ground together in a mill. Here you can spend a nice weekend, enjoying the peace and quiet of the Latvian countryside and taste delicious dishes made from products grown by local farmers. Offers a 1-hour tour of the *Ķoņi mill*, during which you can see the spinning machine in operation, manufactured in 1872 at the *Robert Buchold* machine factory in Werdau, Germany.

Ķoņu dzimnava, Ķoņu pag.  
T.+371 26424567  
GPS 57.943725, 25.372408

**77 Naukšēni winery\***

Naukšēni is engaged in winemaking for the second generation, achieving great success in local and international winemaking competitions over the years. While visiting the winery, the owner Jānis Baunis will introduce the work of the factory and give a taste of delicious wines made from local berries and fruits, *Paradise apple ciders* and the

*Strong storers.*

Saulesvārti, Naukšēnu pag.  
T.+371 28628530  
nauksenuvini.lv  
GPS 57.884778, 25.447889

**78 Naukšēnu Cilvēkmuzejs**

The *Naukšēnu Cilvēkmuzejs* tells about the events of the history of North Vidzeme and especially residents of Naukšēni through the experience of the local population. Here you can understand the connections between the destinies of previous generations and historical events, look at the evidence of tangible and intangible history.

The museum's exposition is unique in that it is not hidden in glass showcases.

Doktorāts, Naukšēni  
T.+371 26452037  
GPS 57.884657, 25.457948

**79 Oleri Manor\***

Arriving at *Oleri Manor*, feel the old way of life of the old country manor. The creative family of artists – Kārlis and Ieva Zemīši, who currently manage the manor – kindly open the doors of their house, offering excursions around the manor and landscape garden, as well as organizing concerts and *Garden story* (*Dārza stāstu*) events.

Oleru muiža, Jeru pag.  
T.+371 29251565  
olerumuiza.lv  
GPS 57.809307, 25.362648



## ◆ TOURISM ATTRACTIONS ◆

### 80 Oleri bog trail

The *Oleri Bog* is a nature reserve that is part of the *North Vidzeme Biosphere Reserve*. About 1 km long, linear forest path leads to the observation tower on the side of the bog. Further behind the observation tower, it is a transition and moss swamp, which has formed in the place of a lowered lake, and is a real kingdom of hives, bog arums and menyanthes.

*Oleru purva taka*, Jeru pag.  
GPS 57.8108327, 25.3711802

### 81 Blacksmith's workshop Kalnmesteri\*

Here you will be able to see with your own eyes the extensive exposition of wrought iron, which will be accompanied by the attractive stories of the enthusiastic owner of the *Kalnmesteri*, Edvīns. Participation in the blacksmith's smithy will make the visit more unforgettable. Wrought iron products can be purchased on site.

Rīgas iela 65D, Rūjiena  
T.+371 29481759  
GPS 57.887553, 25.365782

### 82 Pilsgravas (V-IX)\*

*Pilsgravas* is located in a beautiful place next to the Rūjiena castle mound and the Rūja river. During the visit, the hosts will show off their organic farming, speak more about goat farming and make different types of cheese. Delicious *Pilsgravu* cheeses, which have received multiple awards, will also be available to taste.

*Pilsgravas*, Ķoņu pag.  
T.+371 26219024  
GPS 57.881512, 25.372125

### 83 Motorcycle track Eriņi\*

On the *Eriņi motorcycle track* you will be able to experience an adrenaline-filled adventure while riding the track in a motorcycle with a sidecar. During the tour led by the hosts, you will be able to learn interesting stories, watch a film, as well as see a motocross themed exhibition. There is also a sauna in a metal barrel and a fireplace hall for various events.

*Lejeriņi*, Ķoņu pag.  
T.+371 26514524  
GPS 57.8108327, 25.3711802

### 84 Naukšēni Manor\*

The manor house, barn, cheese shop or clock tower and the park are cultural monuments of national significance. You can see the buildings from the outside by walking through the manor park. If you want to learn more about the history of the manor, see the manor hall, as well as look into the cheese shop and barn, you need to apply for a guide in advance.

*Naukšēnu muiža*, Naukšēni  
T.+371 26452037 (excursions)  
GPS 57.884819, 25.450302

### 85 Ćiruļi (V-X)\*

The magnificent flower garden *Ćiruļi*, boasts a rich collection of peonies, perennials, floes and lilies. In recent years, owners can be proud of plants that are not found in every garden. The family has always been united

by a love of flowers, so the well-kept garden around the house and the tour led by the hosts will delight the eyes and mind of every visitor.

*Ćiruļi*, Jeru pag.  
T.+371 26432025, +371 29328444  
GPS 57.866700, 25.366506

### 86 Stūri (VI-IX)\*

As a result of the housewife's diligent actions and love for her land, a productive farm has been created that respects everything natural and biological. Visiting here during the strawberry season, you will discover how many varieties of strawberries there are, and you will be able to taste them directly from the bed. Meanwhile in the second half of the summer, sea buckthorn and peaches are getting golden coloring here. The hostess will be happy to share stories about the daily life on the berry farm.

*Stūri*, Ķoņu pag., T.+371 29176158  
GPS 57.884833, 25.376060

### 87 Gladiolapluss (VIII-IX)\*

In the *gladiolus garden* you can see more than 450 gladiolus varieties from breeders from Latvia, Lithuania, Russia, Ukraine, Czechia, Canada and the USA. The visit will be accompanied by the stories of the owner Modris, for whom the cultivation of these ornamental plants has been a lifelong love and activity for more than 30 years.

*Zemeņu iela 18*, Rūjiena  
T.+371 28822895  
gladiolapluss.lv  
GPS 57.903730, 25.329280

### 88 The horse whisperer\*

When visiting the stable *Horse whisperer*, you can pet the residents of the stable, go horseback riding or horse-drawn carriage rides, as well as enjoy the magic of the moment and the feeling of freedom on horseback. Hostess Urzula is a certified specialist with pedagogical education and, depending on the wishes and physical fitness of the guests, offers leisurely horseback riding for children and adults, as well as for those who enjoy sports and fast riding and beginners in equestrian training.

*Eriņi*, Ķoņu pag.  
T.+371 26286144  
GPS 57.903159, 25.362314

### 89 Ķoņi Hill

*Ķoņi Hill* is the largest drumlin in Latvia and Eastern Europe, formed as a result of melting glaciers. Its absolute height is 92.6 m, relative 35 m, length 9.6 km, width 2.4 km. From *Ķoņi Hill* you can see the expressive natural and cultural history of this place, swing in the big wooden swing, as well as sit in the *Wind Chariot*, the *God's chair* and see the wide landscape to the Burtnieki valley.

A small pond in the shape of the Baltic Sea has been created on *Ķoņi Hill*, and a cognitive stone trail has been built next to it.

*Ķoņu kalns*, Ķoņu pag.  
GPS 57.938620, 25.339277

### 90 Pīksāru church

The church was built intermittently from 1914 to 1936. It was used as a warehouse in the days of the collective farm (socialism). The only sign of the building as a church that has survived to this day is the bell in the tower with a wish engraved on it: *to ring forever for the glory of God and the joy of people*. The church is open during concerts and religious services.

*Pīksāri*, Naukšēnu pag.  
GPS 57.893663, 25.593408



## ◆ CATERING ◆

28 **Trīs draugi** *Valdemāra iela 6, Rūjiena*, T. +371 64263694, +371 26322949  
GPS 57.896129, 25.324801

29 **E.d.a.** *Valdemāra iela 5, Rūjiena*, T. +371 26455565, kafeeda.lv  
GPS 57.896129, 25.325895

## ◆ ACCOMMODATION ◆

43 **Laivas līcis** *Rīgas iela 60, Rūjiena*, T. +371 26778322  
GPS 57.886681, 25.362432

44 **Apartment 17** *Brīvības iela 7-17, Rūjiena*, T. +371 26450931  
GPS 57.896759, 25.324184

45 **Grēni** *Ķoņu pag.*, T. +371 26539913  
GPS 57.906625, 25.327636

46 **Ķoņu dzirnavas** *Ķoņu pag.*, T. +371 26424567  
konudzirnavas.lv  
GPS 57.943725, 25.372408

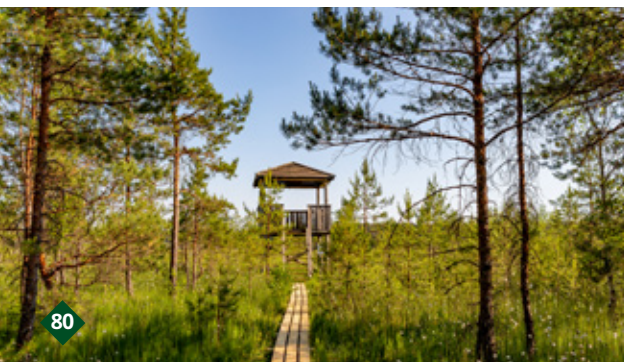
47 **Rūjas nāras** *Nāras, Naukšēnu pag.*, T. +371 26326381, +371 64268194  
naras.lv  
GPS 57.884921, 25.450161

48 **Naukšēni Manor** *Naukšēnu pag.*, T. +371 29293630  
pilis.lv  
GPS 57.884903, 25.447049

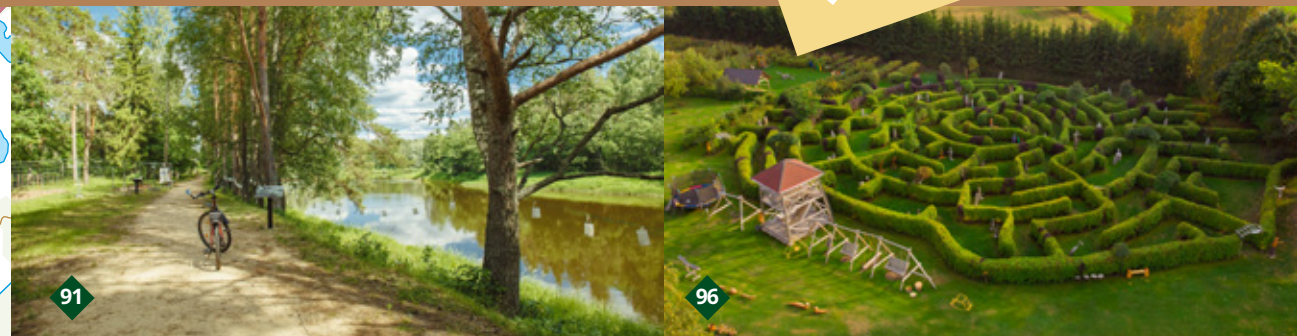
49 **Udzēni** *Lejasudzēni, Naukšēnu pag.*, T. +371 26528965  
udzeni.lv  
GPS 57.922808, 25.552997

50 **Oleri Manor (III-XI)** *Jeru pag.*, T. +371 29224494  
olerumuiza.lv  
GPS 57.809307, 25.362648

51 **Park Paipusi (V-X)** *Paipusi, Jeru pag.*, T. +371 28776792  
GPS 57.794485, 25.310859







**91 River Gauja Nature trail and wooden sculpture park**

Around 30 different wooden sculptures in honor of the raftsmen have been erected in the Strenči Gaujmala, so that the memories of the rafting trade, which was so widespread in these places in the past, do not disappear. As part of the annual *Gauja Rafting Festival*, a competition for sawing wooden sculptures is taking place, when new sculptures are being built, which will later be installed in the *Wooden Sculpture Park*. While walking along the *Gauja Nature Trail*, enjoy being in nature, experience the beauty and diversity of nature, as well as see cultural and historical sites.

*Strenču Gaujmala*  
GPS 57.623440, 25.690126

**92 Strenči Church\***

The church was built in 1907 in the style of national romanticism, which developed within the framework of Art Nouveau. This is evidenced by the shape of the church windows and doorways, but the influence of this style is especially evident in the interior decoration of the church, where the ornamental color combines Christian and ethnographic symbols. In the church you can see a unique painting of *Christ and Peter at sea* by Indriķis Zeberīņš.

Baznīcas iela 2, Strenči  
T.+371 29633822  
GPS 57.630152, 25.689538

**93 Seda Bog**

As a result of peat extraction, a

peculiar cultural landscape has emerged here, consisting of peat extraction fields, bog ponds and a narrow-gauge railway, which is used for peat extraction. The Seda Bog walker route is located in the nature reserve *Sedas purvs*, which is an excellent bird protection area. More than 100 bird species nest in the reserve. The route consists of two separate loops, which can be combined by walking another 2.5 km. The length of the *Jērcēni* side loop is 5.5 km, *Seda* - 4.2 km. On both routes it is possible to climb the observation tower.

*Jērcēnu pag.*  
The beginning of Jērcēni loop:  
GPS 57.7055987, 25.7001324

The beginning of Seda loop:  
GPS 57.6699587, 25.7514815

**94 Exposition of the cultural and historical heritage in Seda\***

In the exhibition hall you can get acquainted with the history of the development of the surroundings of Seda, starting from the historical period, when the property of the *Salānieši* farm was still expanding in the future town of Seda, to the construction of the town of Seda. Through historical evidence, you will learn stories about the reasons for the creation of this town and the history of the Seda peat plant.

Parka iela 21, Seda  
T.+371 28323986  
GPS 57.650474, 25.754507

**95 Chocolate treat factory R Chocolate\***

In the small chocolate delicacy

factory in the center of Trikāta you can buy chocolate snacks and homemade ice cream for every taste, while in the workshop you can get to know the masters of making chocolate as well as prepare your own delicacy.

*Zelta Auns, Trikāta*  
T.+371 29393881, rchocolate.lv  
GPS 57.543762, 25.708657

**96 Wooden sculpture park and labyrinth in Beverīna (V-X)**

The 2.5-hectare open-air recreation park with more than 80 different large-format outdoor games and attractions, 6 labyrinths (the largest of which is available from the age of 18) and more than 370 wooden sculptures will appeal to both children and adults.

*Arāji, Brenguļu pag.*  
T.+371 20383303  
beverinaslabirinti.lv  
GPS 57.497744, 25.550157

**97 Laserpark Shooter\***

Lasertag is an active, cohesive and modern team game of new technology in the fresh air all year round. It is suitable for all interest and age groups - large and small, families, friends, larger groups and collectives. Fun and positive emotions vibrate during the game, playing various missions and scenarios in an obstacle arena equipped for this purpose, using special game equipment.

*Mikēli, Brenguļu pag.*  
T.+371 29927299  
lazerparks.lv  
GPS 57.4984344, 25.5588878



## ◆ TOURISM ATTRACTIONS ◆

### 98 Brenguļi beer brewery and Brenguļi beer garden (IV-IX)

*Brenguļi beer brewery garden* is located in a picturesque location on the banks of the Abula river, where you can taste not only delicious beer but also various snacks. Well-equipped picnic areas. Next to the beer farm there is a brewery and a small hydroelectric power station.

Brenguļi  
T.+371 22490592  
GPS 57.5462913, 25.5453764

### 99 Local farm Vīnkalni (V-IX)\*

At the local farm *Vīnkalni* the Latvian harmoniously intertwines with the Italian. You are welcome if you want to be in a beautiful, tidy rural environment, actively relax and participate in an authentic Italian pizza making master class. The landlord will take you on a tour, telling about the works of ancient craftsmen, and show a collection of antiques and furniture. In the stone barn it is possible to organize events.

*Vīnkalni*, Kauguru pag.  
T.+371 29224599  
GPS 57.477594, 25.445138

### 100 Candied fruit for gourmands Granberry\*

Take a field trip through the farm and taste specially for gourmands prepared candied fruit and syrups from quinces, pumpkins and rhubarb selected in the farm. Special offer – candied fruit in chocolate!

*Zarupi*, Brenguļi pag.  
T.+371 29263439  
granberry.lv  
GPS 57.533105, 25.517027

### 101 Abula Nature trail

The approximately 10 km long trail leads along the left bank of the Abula river, forests and manor houses. The circular route starts in the center of Brenguļi village and winds along the bank of the Abula to the mouth of the river Gauja, then throws a circle along forest paths and the territories of ancient manors back to Brenguļi. By the campsite *Jaunarāji* the trail winds through the small but charming *Love Trail (Milestības taka)*.

Brenguļi pag.  
GPS 57.5462913, 25.5453764

### 102 Felting with Inga Logina\*

When visiting Inga Logina's felting workshop, you will learn how to make felted bath hats, slippers, boots and many other things, as well as try your hand at felting. Purchase of locally made felt products.

*Rozītes*, Brenguļi pag.  
T.+371 28446697  
GPS 57.504620, 25.556653

### 103 Līga Nature SPA cosmetics factory\*

The production plant of the cosmetics brand *Līga Nature SPA* is located in a scenic location on the shores of lake Trikāta. Here you will be able to get to know the

production processes of natural cosmetics, as well as make your own cream supplemented with essential oils, which you can then take with you.

*Aizsili*, Trikāta, T.+371 26461060  
salonsliga.lv  
GPS 57.542506, 25.711334

### 104 Trikāta Castle Mound and castle ruins of the Livonian Order

Trikāta Castle Mound is one of the probable locations of the ancient Latgali Beverin Castle. The castle ruins of the Livonian Order of Trikāta are located on it. The castle was completely destroyed during the Great Northern War. Nowadays, visitors here can see the wall of the south-eastern side about 2 meters high and fragments of the ruins of the tower at a height of 4-5 meters.

Trikāta  
GPS 57.5409387, 25.7088813

### 105 Trikāta stables\*

The horse farm *Trikātas stalli* is a family company, that has been breeding horses for four generations. When visiting the farm, you can not only ride a small loop on a horse's back, caress and take photos with them, but also get to know and love other animals found on the farm – rabbits, sheep and poultry.

*Jaunupītes*, Trikātas pag.  
T.+371 20021817, +371 26979076  
GPS 57.527619, 25.752515

### 106 Exhibition of antiques by Guntis Ķigulis\*

In *Vadži* you can see a notable culturally historical heritage an extensive collection of antiques. Here you will see ancient wooden tools, instruments, furniture, household goods, agricultural and other machinery.

*Vadži*, Plāņu pagasts  
T.+371 29263766  
GPS 57.601977, 25.809281

### 107 Farm Puntīņi\*

Berry growing and processing is based on handicrafts, which allows to preserve the unique value of the product. It is possible to taste and buy healthy plant products - frozen berries, juice, homemade ice cream and other locally made products.

*Virslavas*, Jērcēnu pag.  
T.+371 29467894  
GPS 57.665058, 25.667860

### 108 Jērcēnmuiža

The buildings of the *Jērcēnmuiža* complex were built in the second half of the 19th century, which currently consists of the manor house *Freileņu*, barn and stable. The manor complex is surrounded by *Jaunjērcēni* park with various tree species - oak alleys and multi-branched lindens are unique.

*Jērcēnmuiža*, Jaunjērcēni  
GPS 57.690994, 25.649724

### 109 Leisure center Baiļi

In the coldest months of the year, fans of winter sports can go skiing and snowboarding, or go boating and rafting during the water tourism season.

In *Baiļi* it is also possible to organize events in the jurta, as well as relax in the sauna.

*Baiļi*, Kauguru pag.  
T.+371 29284119  
baili.lv  
GPS 57.533859, 25.467963



## ◆ CATERING ◆

30 *Savnik Rīgas iela 6, Strenči*, T.+371 29178252  
GPS 57.627655, 25.684243

31 *Daily Valkas iela 11, Strenči*, T.+371 26451522, daily.lv  
GPS 57.627703, 25.697689

32 *Kauči Plāņu pag.*, T.+371 29413873, GPS 57.629885, 25.742104

33 *Brenguļi beer garden (IV-IX) Brenguļi*, T.+371 22490592  
GPS 57.5462913, 25.5453764

## ◆ ACCOMMODATION ◆

52 *Guest house in Strenči Rīgas iela 28A, Strenči*, T.+371 20242829  
strencu-viesunams.lv, GPS 57.627110, 25.674389

53 *Ausmas Jērcēni*, T.+371 29288247, GPS 57.691297, 25.649579

54 *Saieta nams DEPO Trikāta*, T.+371 26518718  
GPS 57.543136, 25.709764

55 *Jaunarāji Brenguļi pag.*, T.+371 29121702, jaunaraji.lv  
GPS 57.547015, 25.489977

56 *Baiļi Kauguru pag.*, T.+371 29284119, baili.lv  
GPS 57.533859, 25.467963

57 *Jaunāmuiža apartments Kauguru pag.*, T.+371 26123000, jmuiza.lv  
GPS 57.508153, 25.461030

58 *Gaujas priedes Kauguru pag.*, T.+371 27888865  
GPS 57.505681, 25.381871

59 *Uzbāzes Kauguru pag.*, T.+371 27036862, uzbazes.lv  
GPS 57.496106, 25.459647

60 *Miglīnas Kauguru pag.*, T.+371 29527551, miglinas.lv  
GPS 57.499335, 25.414239







## ◆ ACTIVE TOURISM AND EQUIPMENT RENTAL ◆

### BICYCLE AND ELECTRIC SCOOTER RENTAL

**Eži**  
Rīgas iela 43, Valmiera  
T.+371 64226223  
veikals.ezi.lv  
GPS 57.5334163, 25.4000981

**Gandrs**  
Rīgas iela 27, Valmiera  
T.+371 22018353  
gandrs.lv  
GPS 57.537519, 25.414887

**X-Centrs**  
Gustava Ērenpreisa iela 2  
Mazsalaca  
T.+371 29453079; +371 29320359  
xcentrs.lv  
GPS 57.860076, 25.055545

**BOLT electric scooter rental**  
Valmiera  
bolt.eu

### WATER EQUIPMENT RENTAL

**Rowing club Straume**  
(Boats, SUP boards)  
Kāpu iela 15, Valmiera  
T.+371 26163026  
GPS 57.5357273, 25.4334474

**Gaujas Vītoli** (Kanoes, kayaks)  
Valmiera  
T.+371 26180082  
gaujasvitoli.lv  
GPS 57.5369745, 25.4304227

**Pie Gaujas** (Boats, rafts)  
Valmieras pag.  
T.+371 26275761  
piegaujas.lv  
GPS 57.538465, 25.426361

**Vaidaveži (VI-X)** (Boats, SUP boards)  
Parka iela 20, Vaidava  
T.+371 26163026  
GPS 57.433372, 25.284334

**Vidzemes laivas** (Kanoes, kayaks, motorized boats, SUP boards)  
Ezera iela 11A, Burtnieki  
T.+371 29127198, +371 25631060  
vidzemeslaivas.lv  
GPS 57.697687, 25.268339

**Ezerpriedes (V-X)**  
(Boats, SUP boards, catamarans)  
Ezerpriedes, Burtnieku pag.  
T.+371 29461455  
ezerpriedes.lv  
GPS 57.732728, 25.292900

**Ezerupe** (Kanoes, kayaks, row and motorized boats, SUP boards)  
Laivu bāze Ezerupe, Vecates pag.  
T.+371 25660000  
GPS 57.795854, 25.145496

**X-Centrs - Pa Salacu**  
(Kanoes, kayaks, SUP boards)  
Gustava Ērenpreisa iela 2  
Mazsalaca  
T.+371 29453079, +371 29320359  
and Valdemāra iela 6, Rūjiena  
T.+371 29245333  
xcentrs.lv  
GPS 57.860076, 25.055545

**Salaca river boat rental Ferrits**  
(Inflatable boats, kanoes, SUP boards)  
Gustava Ērenpreisa iela 2  
Mazsalaca  
T.+371 29434534  
GPS 57.859929, 25.055597

**Salacas kanoes** (Kanoes)  
Vārpas-12, Mazsalacas pag.  
T.+371 29286988  
salacaskanoes.lv  
GPS 57.871527, 25.049591

**Ķoņu dzirnavas**  
(Boats, motor raft)  
Ķoņu dzirnavas, Ķoņu pag.  
T.+371 26424567  
konudzirnavas.lv  
GPS 57.943725, 25.372408

**Rūjas nāras** (Boats, SUP boards, motor raft)  
Nāras, Naukšēnu pag.  
T.+371 26326381, +371 64268194  
naras.lv  
GPS 57.884921, 25.450161

**Laidavas** (Boats, SUP boards)  
Laidavas, Jērcēni  
T.+371 29171961  
GPS 57.690141, 25.650664

**Boat rental in Trikātā** (Row boats)  
Beverīnas iela 8, Strenči  
T.+371 29763523  
GPS 57.625243, 25.690101

**Boat rental in Trikātā** (Row boats)  
Vijupi, Trikātā  
T.+371 28388956  
GPS 57.540211, 25.710582

More about active tourism opportunities, routes and equipment rental:







### **Valmiera Tourism information center**



Bruņinieku iela 1, Valmiera



[tic@valmierasnovads.lv](mailto:tic@valmierasnovads.lv)



+371 26332213



[visit.valmiera.lv](http://visit.valmiera.lv)



/visitvalmiera



### **Zilākalna cultural history and visitors center ZTornis**



Parka iela 2, Zilaiskalns



[ztornis@valmierasnovads.lv](mailto:ztornis@valmierasnovads.lv)



+371 26122943



[ztornis.lv](http://ztornis.lv)



/ZTornis



### **Guided tours in Valmiera municipality**

Book a guided tour:



[tic@valmierasnovads.lv](mailto:tic@valmierasnovads.lv)



+371 26332213



[visit.valmiera.lv](http://visit.valmiera.lv)

# **VISIT VALMIERA.**

**Publisher:** Valmiera municipality, 2023

**Foto:** Photo archive of Valmiera municipality and tourism entrepreneurs