

Travel in Valmiera region!

EN

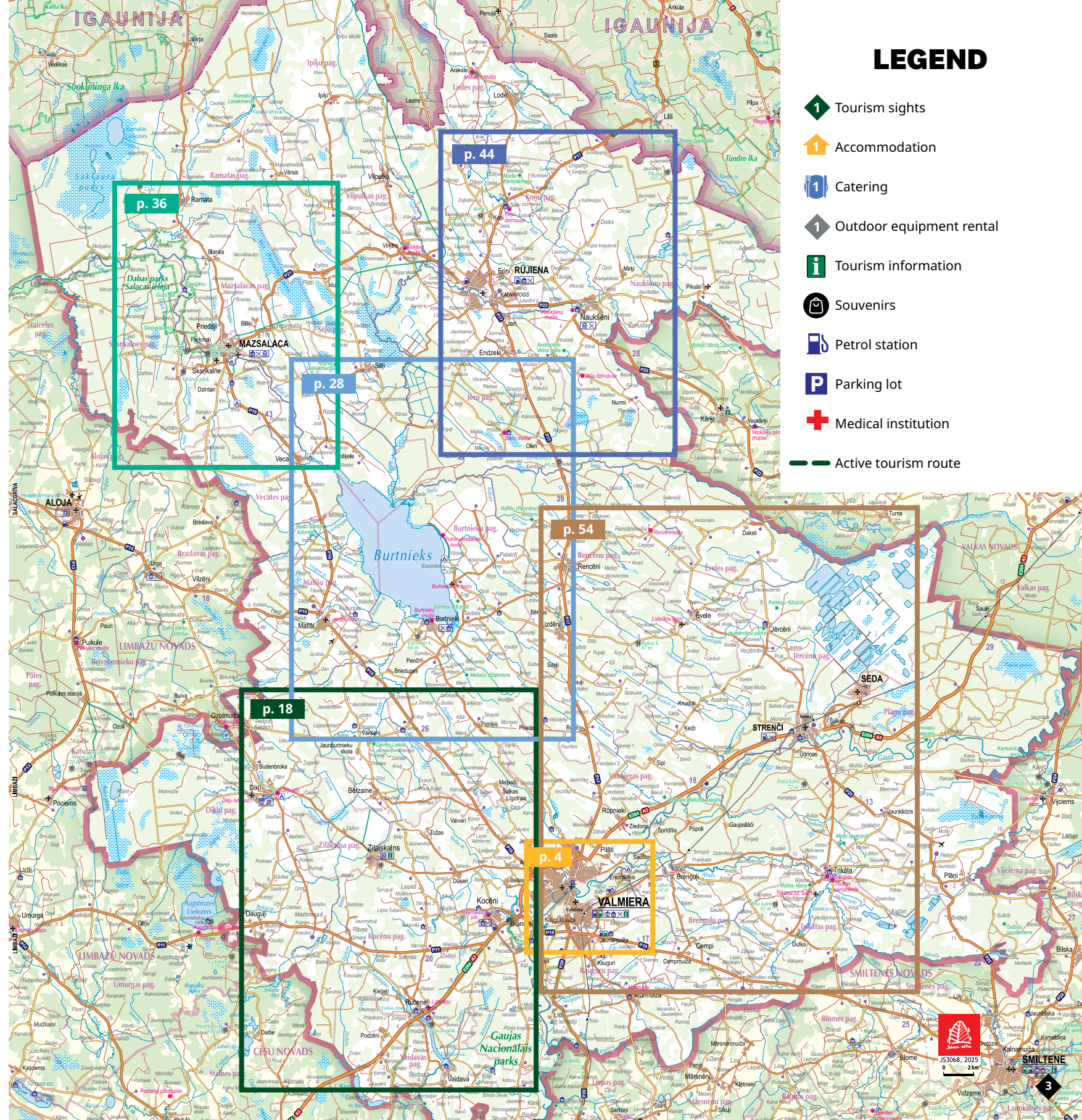
**VISIT
VALMIERA.**

visit.valmiera.lv

10 FACTS ABOUT VALMIERA REGION

- 1 Valmiera region is the fourth largest municipality in Latvia in terms of territorial planning.
- 2 Valmiera is the administrative center of the region and a historic Hanseatic town. The year of Valmiera city establishment is considered to be 1283, as recorded in the chronicle.
- 3 The beginnings of theater, Song festival and various Latvian-wide cultural events can be found in the Valmiera region. For example, Dikļi is known as the cradle of the *Latvian Song Festival*.
- 4 Lake Burtnieks is located in Valmiera region, it is the fourth largest lake in Latvia. There lives legendary lake fish – Burtnieks zander.
- 5 Once upon a time, Gustavs Ērenpreiss – the founder of the legendary bicycle building and maintenance workshop – was born in Mazsalaca.
- 6 Valmiera region is rich with various natural treasures – rivers like Gauja and Salaca, white sandstone outcrop Sietņiezis, Skaņšalkalns Nature park, Ķoņi hill, Zilaiskalns, Seda marsh and more.
- 7 Rūjiena is known as the *capital of ice cream*. At the beginning of summer, a particularly delicious *Ice Cream Festival* is celebrated.
- 8 There are several *Natura 2000* specially protected natural areas in Valmiera region, for example, *Gauja National Park* and *Northern Vidzeme Biosphere Reserve*.
- 9 Strenči is the *capital of Gauja river rafters*. Every year in May, rafting skills are honored at the *Gauja Raftsmen festival*.
- 10 Valmiera region has a highly developed sports infrastructure – Jānis Daliņš Stadium and the BMX track of Māris Štrombergs are just a few examples.

VALMIERAS NOVADS.



LEGEND

- Tourism sights
- Accommodation
- Catering
- Outdoor equipment rental
- Tourism information
- Souvenirs
- Petrol station
- Parking lot
- Medical institution
- Active tourism route

VALMIERA



1 Restaurant AKUSTIKA



AKUSTIKA is a modern, cozy, and family-friendly restaurant located in one of Valmiera's oldest historic buildings — the former post and telegraph office. In 2023 and 2024, AKUSTIKA was included in the prestigious *MICHELIN GUIDE*. The restaurant offers event spaces, including an outdoor terrace during the summer season.

Diakonāta iela 6, Valmiera
+371 26660202
akustikavalmiera.lv
GPS 57.536447, 25.420588

1 Valmiera Castle

In the oldest part of Valmiera's Old Town — within the historic castle grounds — the city's oldest wooden building stands side by side with modern architecture. Nestled inside the castle walls is the *Valmiera Museum*, where a rich historical collection is complemented by contemporary art exhibitions. One of the museum's highlights is the exhibition *de Woldemar*, which immerses visitors in the story of ancient Valmiera. Here, the early history of the town and castle comes to life, along with the worldviews of past Valmierians, the power of Hanseatic merchants, and the craftsmanship of skilled artisans. Whether accompanied by a guide* or exploring on their own, visitors are welcome to tour the exhibition and stroll through the Old Town of Valmiera. The *de Woldemar* also houses the Valmiera Tourism information center.

Bruninieku iela 1, Valmiera
+371 26332213, +371 64223620
valmierasmuzejs.lv
GPS 57.539057, 25.427530

2* Valmiermuiža Craft Brewery

You are warmly invited to a brewery tour, where you can witness the slow, careful brewing process with your own eyes! The storytellers of Valmiermuiža will show you how delicious, natural, and regal beer is crafted from the pure waters of Valmiermuiža, fully malted barley, noble hops, and yeast — perfect for the festive table. The visit offers a chance to experience refined flavor nuances and discover the subtleties of beer tasting. To enjoy the exquisite interplay of diverse beer flavors with food, guests are invited to the *Valmiermuiža Beer Kitchen*, located right next to the brewery. Take the best impressions home with you! The brewery shop offers the widest selection of Valmiermuiža brews — more than 45 flavors — along with unique local artisan products.

Dzirnavu iela 2, Valmiermuiža
+371 20264269
valmiermuiza.lv
GPS 57.555858, 25.431196

TOP SIGHTS



*Visits must be booked in advance

WHAT TO SEE AND DO



3 Gauja River and Gauja River Steep banks

One of the most picturesque and scenic spots along the banks of the Gauja River in Valmiera. This site features the most complete outcrops of the third top terrace in the Gauja Valley — 80 meters wide and 10–15 meters high. The riverbank offers a breathtaking view of the Gauja and the opposite shore. The river is perfect for boating, while the nearby trails are ideal for walking, cycling, and relaxing in nature.

Atpūtas parks, Valmiera
GPS 57.540209, 25.438903



4 Park of Senses by the Gauja River Steep banks (V-IX)

Here, a walk in the fresh air along the steep Gauja River banks, surrounded by pine trees, can turn into a real adventure thanks to the park's diverse offerings. Enjoy a 2 km-long *Barefoot trail* made of various natural materials and surfaces, combined with balance and agility exercises. You'll also find a unique 5–11 meter high *Trail in the trees*, built from everyday items commonly found in Latvian homes, and four zip lines crossing the Gauja River. For younger visitors, there's a special *Trail in the trees for children* and a fun *Net Cube* attraction.

Jāņa Daliņa iela 2, Valmiera
+371 27879242, sajutuparks.lv
GPS 57.540214, 25.438918



5 Valmiera St. Simon's Church

The church was built at the end of the 13th century, almost completely keeping its medieval looks. Several valuable art monuments can be found in the church: burial plaques (15–16th century), the Ladegast pipe organ (1886), a pulpit with paintings from 1730s. You can see the bells and clockwork of the church. From the church tower in Valmiera, visitors can enjoy a panoramic view of the city, see the clock mechanism up close, and experience a historical painting that *comes to life* to share the church's stories.

Bruniņieku iela 2, Valmiera
+371 29413043, simanadraudze.lv
GPS 57.538484, 25.426471



6* Valmiera Theater

Valmiera Theater, founded in 1923, is the only professional theater in the Vidzeme region. By offering to the audience diverse, high-quality and contemporary content suitable for different audiences, the theater attracts cultural connoisseurs from all over Latvia and abroad. Going on a guided tour, you can get to know the renovated premises of the theater, starting from the public audience area, up to the lacing attic, the backstage and the props workshop.

Lāčplēša iela 4, Valmiera
+371 29141898, valmierasteatris.lv
GPS 57.539439, 25.425939

*Visits must be booked in advance



Green Railways route: Smiltene – Valmiera – Ainaži
Long distance hiking route *The Forest Trail*
Long distance hiking route *The Way of Saint James (Camino de Santiago)*
Hiking trail *Between the four bridges of Valmiera*



JS3092, 2025
0 200 m



7

7 Millpond promenade

For a walk, bike ride, watching rainbow dances in the fountain or for relaxation – Millpond in the heart of Valmiera helps to find refreshment for body and mind even on the hottest summer days. The restored promenade of the lake, next to Ziloņu (Elephant) street, with a very special name, will delight the eyes with bright greenery, wooden attractions for children and comfy benches for hearty conversations.

Dzirnavu ezeriņš, Valmiera
GPS 57.539769, 25.423482



8

8 Cinema Gaisma

The movie theater has room for 152 spectator seats. It is equipped with a world-class sound system. The guests can enjoy the latest movies, concerts, opera, ballet and anime in simultaneous world premieres in 2D and 3D. During the special screenings, you can also meet film directors, actors and even music groups. Venue rental available.

Rīgas iela 19, Valmiera
+371 64222641
3dcinema.lv
GPS 57.537768, 25.417340



9

9 Bachelors park

In 1913 the city received the park as a gift from 8 unmarried gentlemen. The pavilion was built in 1914. Preserving its original appearance, it now serves as a concert hall.

Pāvila Rozīša iela 10, Valmiera
+371 27774427
koncertzalevalmiera.lv
GPS 57.536271, 25.417965



10

10* Entertainment venue Zemzeme

Zemzeme is an entertainment venue located in the heart of Valmiera, offering a wide range of activities for all ages. Take part in escape room and team-building games, experience dancing, driving, and sports through virtual reality headsets and simulators. Enjoy a round of table football or have fun with retro gaming consoles. Zemzeme also offers customized event planning tailored to your individual preferences.

Rīgas iela 13, Valmiera
+371 27767876
zemzeme.lv
GPS 57.538141, 25.419782

*Visits must be booked in advance

11* Valmiera Makerspace DARE

Makerspace DARE is the perfect place for creative expression, open to people of all ages. During your visit, you can explore more than 20 different machines — including a laser cutter, 3D printer, and more. Here, you can create unique gifts or decorations for special occasions, bring a business idea to life by prototyping it, or simply get inspired by the creativity around you. Visitors are welcome to join creative workshops with snacks and drinks — a fun way to celebrate a birthday or organize a memorable team-building event.

Cēsu iela 4, Valmiera
+371 29367607, darevalmiera.lv
GPS 57.535008, 25.424022



11

12 Disc golf park Pauku Priedes

The Disc golf park Pauku Priedes is located in a beautiful place on the bank of the river Gauja. The 18-basket course winds through scenic meadows and forested areas, offering a fun and engaging experience for players of all skill levels. The course is free to use with your own equipment. Disc rentals are available by prior arrangement via phone.

Ūdens iela 19, Valmiera
+371 29711189, +371 28358432, dgp.lv
GPS 57.531180, 25.434738



12

13* SPA Līga

SPA Līga is a peaceful oasis in the heart of Valmiera — the perfect place to escape the rush of everyday life and restore emotional and physical balance. Serenity and harmony await through a variety of beauty and wellness treatments, massages, rituals, and full-body SPA experiences. Guests can also purchase organic face and body care products on-site. For a deeper retreat, the SPA Namiņš — located by the Gauja River in Valmiera — offers a unique opportunity to combine SPA treatments with cozy accommodation.

Rīgas iela 7-25, Valmiera
+371 27090511
salonsliga.lv
GPS 57.537858, 25.422355



13

14* BeTriton factory

BeTriton is a unique electric amphibious bicycle that combines the functions of a bicycle, a boat and a mini camper, giving you the opportunity to enjoy a unique adventure both on land and water in an environmentally friendly way. Valmiera is where the production facility of these amphibious bikes is located, where every interested group is invited to go on an exploratory tour to get to know the unusual story of the company's origin and development, various phases of prototyping (R&D) of amphibious bikes, as well as to be inspired by the experiences told by the owners.

Plostnieku iela 12, Valmiera
+371 26548855
betriton.com
GPS 57.532587, 25.413719



14

9



15

15* Rūžeņa SPA

Rūžeņa SPA is located in the quiet center of Valmiera, where you can enjoy harmonious peace and relaxation, indulging in body care and relaxation procedures. The offer includes: Japanese head massage, *Rebozo* cloth massage, and ceremonial cacao rituals. There is a strong focus on using and crafting natural cosmetics made from thoughtfully chosen ingredients. A range of body care products is also available for purchase on-site.

Garā iela 8, Valmiera
+371 29850405
GPS 57.536700, 25.415068



16

16 Sport and active recreation park Mežs

The 200 m² area is perfect for streetball games and other outdoor activities. Young visitors will enjoy the playground, which features various types of swings, balance-training steps, a climbing net, a slide, a trampoline, and more. For those looking to stay active, the fitness area is equipped with outdoor exercise machines, pull-up bars, table tennis, and other workout equipment. Meanwhile, fans of scooters, roller skates, skateboards, or bikes will appreciate the 170-meter-long pump track — a fun and dynamic space for riding.

Rīgas iela 43A, Valmiera
GPS 57.536494, 25.409632



17

17 Iron bridge

An object of the industrial heritage. It is a steel bridge over the Gauja River built in 1912. It used to connect the 114 km long *Ainaži – Valmiera – Smiltene* route (quit operating in 1971). A popular spot for walks and part of the *Green Railways* route.

Dzelzs tilts, Valmiera
GPS 57.528358, 25.408497



18

18 Valmiera swimming pool

Visitors at the *Valmiera Swimming pool* can relax in pools of various sizes, as well as relax in the water recreation area and saunas. The Large swimming pool with 8 swimming lanes is suitable for both adults and children. It is also possible to use the services of the *Sports Health Center*. The venue *Underwater world (Zemūdens pasaule)* is available for hosting children's parties.

Čempionu iela 4, Valmiera
+371 27040012
valmieraspeldbaseins.lv
GPS 57.527566, 25.388508

*Visits must be booked in advance



19

19 Valmiera Olympic center

The *Valmiera Olympic Center (VOC)* is the right place if you want to relax actively! Various sports activities for both adults and children will make the leisure a success. The VOC is home to both domestic and international competitions in basketball, hockey, floorball and other sports, while on weekends guests can take part in public ice skating on the ice rink. The skates can be rented on site.

Čempionu iela 2, Valmiera
+371 20021004
valmierasoc.lv
GPS 57.528069, 25.388043



20

20 Family entertainment center Brīnumu mežs

Brīnumu mežs is an indoor family entertainment center where children's laughter fills the air and imagination knows no limits. Open all year round, it offers fun for both kids and adults — whether on an ordinary day or on a special occasion. Themed party rooms are available for celebrations, along with the cozy forest-inspired café *Meža Kafē*.

Ainažu iela 6, Valmiera
+371 27730899
brinumumezs.com
GPS 57.543469, 25.391898



21

21* Harmony Candles

A family enterprise, where unique decorative and aromatic candles are made with love from natural wax, without any additives. Upon visiting the candle workshop, you can learn about the candle-making process from start to finish, as well as try your hand at the candle-making process yourself. In-house produced candles available for purchase. It is also possible to rent the space for other masterclasses.

Beātes iela 30A, Valmiera
+371 29104363
harmonycandles.lv
GPS 57.542034, 25.407634



22

22 Jānis Daliņš stadium

The stadium and the track and field arena are certified by the *International Association of Athletics Federations*. The stadium offers 1400 seats, while the track and field arena accommodates 470 spectators. The complex also includes a hotel with 100 beds, a café, two basketball courts, and a multi-use playground. The stadium, outdoor sports fields, and children's playground are open to the public 24 hours a day.

Jāņa Daliņa iela 2, Valmiera
+371 29900595
janadalinastadions.lv
GPS 57.541010, 25.440471

10

11



23

23* Valmiermuiža stable

During the tour, you can learn about the daily life of *Valmiermuiža's stable* residents and hear stories about horse care. You'll also have the chance to hug the horses and feed them healthy treats. Just like in the old days, you can enjoy horseback and pony rides, while in winter, sleigh rides are available in Valmiermuiža park and the surrounding area. The stable also hosts social events, photo sessions, and various other gatherings.

Dzirnavu iela 15, Valmiermuiža
+371 26562703
GPS 57.559259, 25.425195



24

24* Golf course Avoti

Valmiermuiža is home to *Avoti*, a world-class 9-hole golf course. The course stretches 1937 meters through a landscape of birch groves, trees, shrubs, decorative greenery, six water hazards, and 15 sand bunkers. Nearby the course, you'll find a driving range, a golf clubhouse, a pro shop, and a golf simulator. Equipment rental and lessons are available for both children and adults.

Avoti, Valmiermuiža
+371 25770024, +371 29499342
avoti.com
GPS 57.556882, 25.443989



25

25* Sports recreation venue KVARC

KVARC, the only indoor beach volleyball hall in northern Vidzeme, is a vibrant sports recreation venue where you can actively spend time with family, friends, and colleagues. Here, you can enjoy beach volleyball and beach tennis, as well as billiards, novus, darts, and table tennis. The facility also features a gym and a playroom for the youngest visitors. After your activities, relax and refresh yourself with a variety of drinks and snacks in the specially equipped bar area.

Vanagu iela 4, Valmiermuiža
+371 22990012
kvarc.lv
GPS 57.566124, 25.434852

USEFUL INFORMATION



12

 **VALMIERA AUDIOGUIDE**



 **PARKING LOTS**



More: visit.valmiera.lv

OUTDOOR EQUIPMENT RENTAL

- 26 **Eži shop** (bicycles, e-bikes) Rīgas iela 43, Valmiera, +371 64226223, ezi.lv
GPS 57.536508, 25.409682
- 27 **Gandrs shop** (bicycles) Rīgas iela 27, Valmiera, +371 22018353, gandrs.lv
GPS 57.537519, 25.414887
- 28 **BOLT** (e-scooters) Valmiera, bolt.eu
- 29 **Charge** (e-scooters) Valmiera, chargemobility.lv
- 30 **Rowing club Straume** (boats, SUP boards) Kāpu iela 15, Valmiera, +371 28397528
GPS 57.5357273, 25.4334474
- 31 **Gaujas Vītoli** (canoe, kayaks) Valmiera, +371 26180082, gaujasvitoli.com
GPS 57.5369745, 25.4304227
- 32 **FUNRENTAL** (ATV) Mūrmuižas iela 16, Valmiera, +371 22016677
GPS 57.520392, 25.444417
- 33 **RIPO** (cars) Dārza iela 4, Valmiera, +371 22033688, +371 29423643, ripoautocentrs.lv
GPS 57.537072, 25.412005
- 34 **TEHAUTO** (cars) Rīgas iela 103, Valmiera, +371 28797472, +371 20003388, tehauto.lv
GPS 57.525172, 25.379690

SOUVENIRS

-  **Valmiera Tourism information center** Bruņinieku iela 1, Valmiera
+371 26332213, visit.valmiera.lv
GPS 57.539098, 25.427803
-  **Daba shop** Rīgas iela 30, Valmiera, +371 27994400, dabadaba.lv
GPS 57.537702, 25.414018
-  **Art salon Zaiga** Rīgas iela 31, Valmiera, +371 64225746
GPS 57.537490, 25.414016
-  **Valmiermuiža Brewery Shop** Dzirnavu iela 2, Valmiermuiža
+371 29135438, valmiermuiža.lv
GPS 57.555858, 25.431196

 **Valmiera Region branded clothing**



 **Origin - Valmiera Region**



13

*Visits must be booked in advance

WHERE TO EAT

RESTAURANTS

- 1 AKUSTIKA**
Diakonāta iela 6, Valmiera
+371 26660202
akustikavalmiera.lv
- 2 Hotel Wolmar restaurant**
Tērbatas iela 16A, Valmiera
+371 64207304
hotelwolmar.lv
- 3 Rātes vārti**
Lāčplēša iela 1, Valmiera
+371 26336259
ratesvarti.lv
- 4 Valmiermuiža Beer Kitchen**
Dzirnavu iela 2, Valmiermuiža
+371 28664424
valmiermuiza.lv



CAFES, BISTROS AND PIZZERIAS

- 5 Bastions**
Bastiona iela 24, Valmiera
+371 26399665
- 6 Lāči**
Rīgas iela 4, Valmiera
+371 25421805
laci.lv
- 7 Bakery Kēkss**
Lāčplēša iela 1, Valmiera
+371 26256460
- 8 Vīnkalni pizzeria**
Bruņinieku iela 4, Valmiera
+371 25543123
vinkalnupicerija.lv
- 9 Theater Akustika**
Lāčplēša iela 4, Valmiera
+371 26296919
akustikavalmiera.lv
- 10 Tērbata**
Tērbatas iela 2, Valmiera
+371 20020576
- 11 Alus bārs**
Strauta iela 1, Valmiera
+371 29941064
alusbars.lv
- 12 Rekords**
Jāņa Daliņa iela 2, Valmiera
+371 20262149
- 13 Pizza Bar and Hangu Sushi**
Georga Apiņa 12, Valmiera
+371 24228819, +371 29333063
pizza-bar.lv, hangusushi.lv
- 14 Čili Pizza**
Georga Apiņa iela 10A, Valmiera
+371 64228558
cilipizza.lv
- 15 Kūku Mīlis**
Kārļa Baumaņa 9, Valmiera
+371 22329998
kukumilis.lv
- 16 Sonāte**
Rīgas iela 10, Valmiera
+371 64374639
- 17 Strops**
Stacijas iela 57, Valmiera
+371 25554777
stropapicas.lv
- 18 1:1**
Rīgas iela 26, Valmiera
+371 28334973
- 19 Rimants**
Miera iela 3A, Valmiera
+371 27322397
- 20 Ahh-meat**
Rīgas iela 37, Valmiera
+371 22816282
- 21 Panda Sushi**
Dārza iela 4, Valmiera
+371 24911942
valmiera.pandasushi.lv
- 22 La Pizza Veloce**
Rīgas iela 45, Valmiera
+371 20009119
atrapica.lv
- 23 La Pizza Veloce Pica & Kebab**
Jāņa Endzelīna 1, Valmiera
+371 27741555
atrapica.lv
- 24 Jautrais ledus**
Rīgas iela 58, Valmiera
+371 26363563
- 25 Pasēdnīca**
Rīgas iela 64, Valmiera
- 26 Hesburger**
Rīgas iela 4, Valmiera, +371 26420417
Rīgas iela 63, Valmiera, +371 20240274
hesburger.lv
- 27 Izsalkušo Picērija**
Ausekļu iela 29, Valmiera
+371 64225335
- 28 Valdeko**
Valmiermuiža
+371 26419451, valdeko.lv

More: visit.valmiera.lv





1



5



4



7

HOTELS

- 1 Wolmar******
Tērbatas iela 16A, Valmiera
+371 6420730
hotelwolmar.lv
- 2 Tērbata Hotel**
Tērbatas iela 2, Valmiera
+371 20702998
- 3 Stadium Hotel**
Jāņa Daliņa iela 2, Valmiera
+371 29900595
janadalinastadions.lv
- 4 O.K. Hotel**
Cempu iela 8B, Valmiera
+371 28605455
- 5 Sports Hotel**
Vaidavas iela 15, Valmiera
+371 25464433
sportshotel.lv
- 6 Student Hotel of Valmiera Vocational School**
Vadu iela 3, Valmiera
+371 26672425
valmierastehnikums.lv

GUEST AND HOLIDAY HOUSES

- 7 Villa Buta**
Baltā iela 6, Valmiera
+371 22020071
- 8 Rātes**
Rātes, Valmieras pagasts
+371 29 334461
atputarates.lv

APARTMENTS

- 9 Main street apartment**
Rīgas iela 7-16, Valmiera
+371 29212845
- 10 Gauja accommodations**
Gaujas iela 2-53, Valmiera
+371 26450931
- 11 Daliņa mansard**
Jāņa Daliņa iela 57, Valmiera
+371 28387688

- 12 Timemachine apartment**
Krāču iela 2, Valmiera
+371 27767876
timemachine.lv
- 13 Baumanis**
Kārļa Baumaņa iela 5, Valmiera
+371 29191086
- 14 Riga street 20 Apartment**
Rīgas iela 20, Valmiera
+371 29487711
- 15 RIGA street Apartments 54**
Rīgas iela 54, Valmiera
+371 29166124
- 16 Upes apartamenti**
Voldemāra Baloža iela 7A-32, Valmiera
+371 23559966
- 17 City chic**
Voldemāra Baloža iela 7A-33, Valmiera
+371 23559966
- 18 Rumido Suite**
Ziemeļu iela 37, Valmiera
+371 27700868

HOSTELS

- 19 Ausekļa street hostel (VII-VIII)**
Ausekļa iela 25A, Valmiera
+371 26651033
- 20 Zvejnieku street hostel**
Zvejnieku iela 13, Valmiera
+371 26651033
- 21 Park of Senses hostel (V-IX)**
Jāņa Daliņa iela 2, Valmiera
+371 27879242
sajutuparks.lv/hostelis

GLAMPINGS

- 22 Urban glamping Šķūņaugša (V-IX)**
Krāču iela 2, Valmiera
+371 27767876
timemachine.lv
- 23 Urban glamping Gliemezis (V-X)**
Krāču iela 2, Valmiera
+371 27767876
timemachine.lv

More: visit.valmiera.lv

WHERE TO SLEEP



3



2



9



23

17

16

TOP SIGHTS



29 24

29 24 **Mazais Ansis**

Cafe with cozy atmosphere inspired by Latvian design traditions, warm wooden furniture, earthy tones, and antique décor awaits you here. In winter, the fireplace adds warmth and charm; in summer, meals can be enjoyed on a spacious lakeside terrace. Guests can savor a wide selection of Latvian dishes and drinks. Banquets for special occasions are available. Next to the café, there is a beautifully maintained area with wooden sculptures and children's play structures. The restored log building features an antique-style interior with wooden furniture and soft pastel tone accommodation rooms.

Ansīši, Kocēnu pagasts
+371 29134890
mazais-ansis.lv
GPS 57.464752, 25.256469



35

35 **Zilaiskalns**

Wrapped in legends and ancient stories, Zilaiskalns is a symbol of national freedom and spiritual endurance. Even today, it remains a place of renewal and strength. At the summit, a 38,5-meter-high viewing tower offers sweeping panoramic views of *Zilaiskalns Nature Reserve* and the surrounding landscape. A 3,5 km circular nature trail — *Zilaiskalns Health trail* — winds along the slopes of the hill, perfect for a refreshing walk in nature.

Zilaiskalns, Kocēnu pagasts
GPS 57.553457, 25.216256



36

36 **Mini Zoo Mežiņi (III-XI)**

The *Mini Zoo Mežiņi* is a Latvian rural craft and animal farm. Here you can see, hug and feed a wide variety of pets and farm birds. In the workshop, the hostess Inguna will introduce to the process of processing Angora rabbit wool from rabbit shearing to wool spinning. You can both watch and participate. You can see and buy a variety of knits from farm wool, rabbit and alpaca wool on site. You can also enjoy meals made from locally sourced produce from Valmiera region farms, and on hot summer days – refreshing ice cream handcrafted at *Mežiņi* farm.

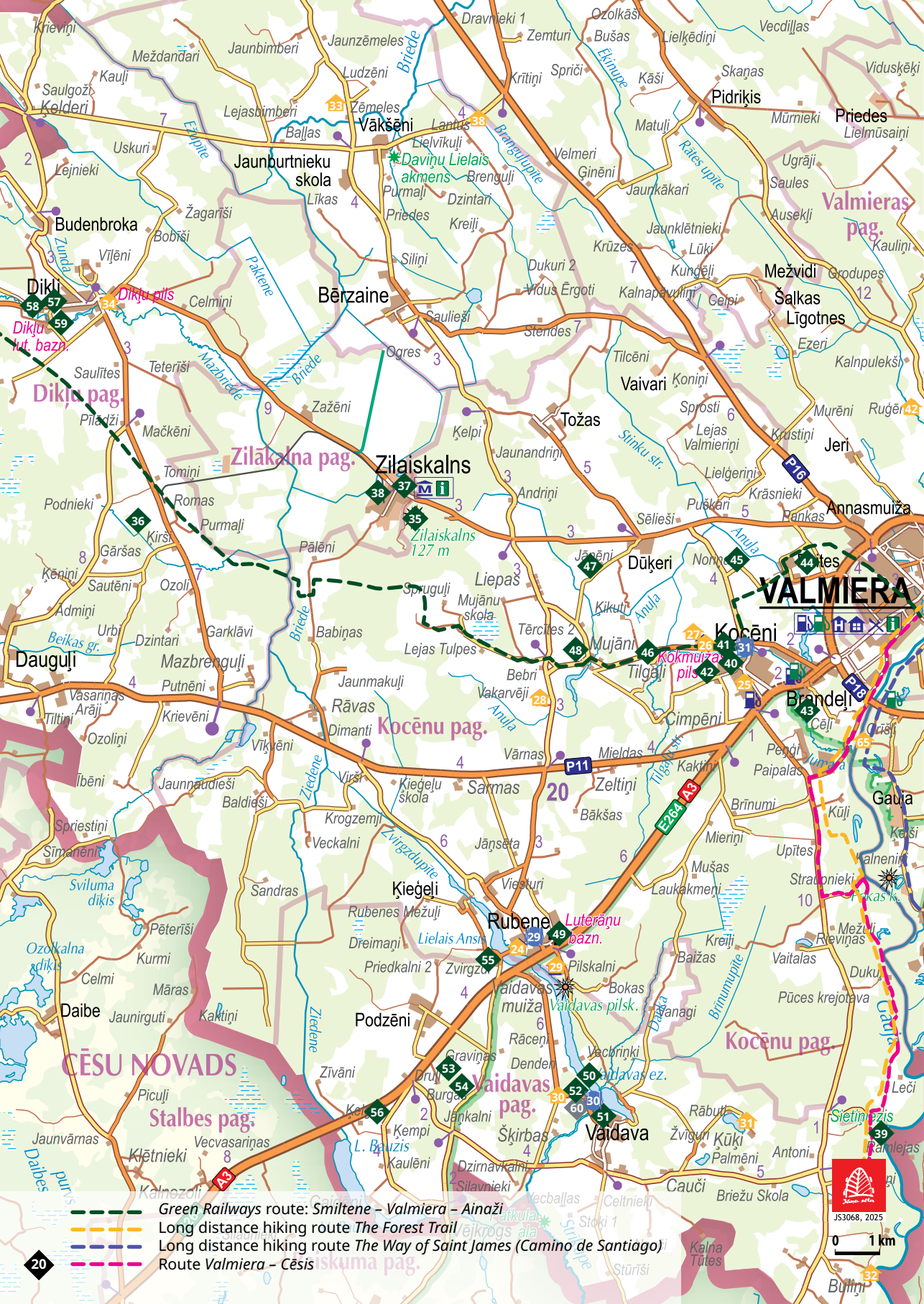
Mežiņi, Dikļu pagasts
+371 29198221
mezini.lv
GPS 57.547415, 25.118941

KOCĒNI and surroundings



39

19



20

- Green Railways route: Smiltene – Valmiera – Ainaži
- Long distance hiking route The Forest Trail
- Long distance hiking route The Way of Saint James (Camino de Santiago)
- Route Valmiera – Cēsis



JS3068, 2025

0 1 km

37 Zilaiskalns Cultural history and visitors center

The Visitor Center is located at the foot of Zilaiskalns, housed in a historic water tower and its modern annex. The exhibition highlights the sacred natural site Zilaiskalns, the history of Zilaiskalns village, and the industrial heritage of the water tower itself. Visitors can virtually ascend above Zilaiskalns and, through virtual reality, a historic narrow-gauge railway locomotive.

Parka iela 2, Zilaiskalns
 +371 26122943
 visitzilaiskalns.lv
 GPS 57.557252, 25.215495

38* Rail bicycles (V-X)

A ride with the Rail bicycle will be an exciting and active adventure for both children and adults. The route leads along the narrow-gauge railway branch from Zilaiskalns village to the peat bog and its total length is ~ 4 km. Each rail bike can accommodate up to four people at once – two pedaling and two seated as passengers. There are four such bicycles available, allowing up to 16 people to enjoy the ride simultaneously. Additionally, each bike can be equipped with up to two child seats.

Zilaiskalns (by the railway platform at the end of Kultūras street)
 +371 26122943
 visitzilaiskalns.lv
 GPS 57.558997, 25.205024

39 Sietiņezis

The largest white sandstone outcrop in the Baltics – standing 15 meters high and stretching 400 meters wide. When warmed by the sun, the rock retains heat, making it an ideal home for wild bees, which have created unique honeycomb formations in its walls. A well-maintained nature trail leads through the area, featuring several viewing platforms, picnic spots, and informational stands to enrich your visit.

Vaidavas pagasts
 GPS 57.4300651, 25.3852144

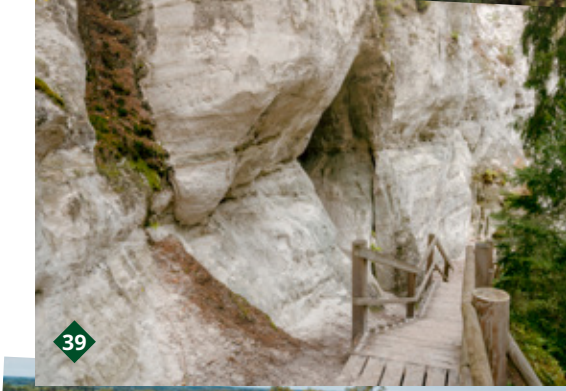
40 Kokmuiža Manor complex

The Neo-Baroque manor was built in the 19th century and later renovated in the mid-1930s to serve as the Kocēni Primary School. Next to the manor is a sports and culture hall. In front of the building lies a welcoming parterre garden, featuring the only publicly accessible spherical sundial in Latvia.

Alejas iela 2, Kocēni
 GPS 57.522826, 25.334523

*Visits must be booked in advance

WHAT TO SEE AND DO





41

41* Guest room Sudrabkalni

Guest room *Sudrabkalni* is located in a beautiful place in Kocēni with a beautiful view to Kokmuīža. It's a place where art, peace and harmony rule. Here you will be able to smell the meadow flowers, get to know grasses and weeds, learn creative craft skills or experience unforgettable photo moments. The hosts of *Sudrabkalni* will take care of a special and pleasant atmosphere for both individual guests and groups.

Sudrabkalni, Kocēni
+371 29663493
viesistaba-sudrabkalni.lv
GPS 57.5232338, 25.3352386



42

42* Horse farm Kocēni

Here you can ride a horse or a carriage, as well as go on a tour of the farm to learn about its daily life and stories about horse care and training. It is also possible to watch how horses are trained, and attend competitions once a year (show jumping, riding and carriage rides).

Astras, Kocēnu pagasts
+371 26405147, +371 29120102
zirgautzetavakoceni.lv
GPS 57.518671, 25.329183



43

43* Bath house Laimes Šūna

The bath house *Laimes Šūna* is located just a moment away from Valmiera and is fully equipped for enjoying leisurely rest, harmonious moments of well-being by the fireplace and relaxing visits to the sauna in a modern design. Perfect for a romantic getaway for two, the house also warmly welcomes families. Little guests will love splashing around in the children's pool, while adults can relax in the outdoor tub — a refreshing retreat on hot summer days or a cozy warm-up on cooler evenings.

Laimēni, Kocēnu pagasts
+371 20031321
GPS 57.511798, 25.368957



44

44* Lasertag Dubultprieks

5 km from Valmiera is a place for active recreation of new technologies, suitable for all interest and age, groups and, most importantly – families. Here you can have fun running, climbing, crawling and wading, as well as just sitting and relaxing. The mission of the laserpark: shared joy is double joy.

Sīmaņi, Kocēnu pagasts
+371 28338983
GPS 57.539573, 25.359285

22 *Visits must be booked in advance

45* Berga wines

Family factory produces wines, sparkling wines, ciders and soft drinks, the quality of which has been repeatedly praised in Latvian and Baltic fruit and berry wine competitions, winning first places in certain categories for several years in a row. While visiting here, the host will tell you about the wine and cider production process, as well as offer to taste them.

Prīmenes, Kocēnu pagasts
+371 26647052
GPS 57.537074, 25.336205



45

46* Peonies of Silezers (V-VII)

The flower garden *Silezeru peonijas* is located just a 10 minute drive from Valmiera. Here you can see about 850 different varieties of peonies. Hostess Sandra will share useful tips and facts about growing and caring for flowers. During the blossoming of peony flowers, the garden will be a great place for a beautiful photo shoot. Peony plants are available for purchase on site.

Silezeri, Kocēni
+371 29115262
GPS 57.523270, 25.321362



46

47* Organic farm Ozolzīles

Ozolzīles is a family-run business specializing in growing quinces and rhubarb. Fruits and berries are processed into healthy, delicious syrups and snacks — crisps. Guests are welcome to take a guided tour of the production facility, led by the owners themselves. During the visit, you'll learn about the farm's journey, discover how the products are made, and get a first-hand look at the freeze-drying process — with plenty of opportunities to taste along the way.

Jaunjānēni, Kocēnu pagasts
+371 28378348, +371 27373111
ozolziles.lv
GPS 57.541138, 25.283509



47

48* Mujāni Community House

Mujāni Community House has served as a gathering place since the 19th century. Today, it has been thoughtfully restored and revived as a beautiful cultural venue, retaining its historical charm and significance. The building is available for both large and small events, including conferences, seminars, meetings, group gatherings, pop-up restaurants, cultural happenings, masterclasses, and other creative or artistic occasions. Recognized as a national cultural monument, the *Mujāni Community House* stands as the unique piece of architectural heritage. Guided tours are available.

Mujāni, Kocēnu pagasts
+371 29829588, mujani.lv
GPS 57.523158, 25.279816



48

23



49

49* Rubene Church

The church dates back to the 13th century, originally built from wood, and gained its current appearance in 1739. It features nationally significant artworks, such as a painted pulpit and a historic goblet. Founded by Priest Indriķis (*Henry of Livonia*), author of the *Chronicle of Henry of Livonia*, the church now offers an interactive exhibition about his life and the church's history, available by prior arrangement. A multimedia exhibition on the region's history — from the 13th century to today — with a focus on Henry's legacy, can also be viewed with a pre-booked guide.

Rubene
+371 29723322
GPS 57.468271, 25.266233



50

50 Lake Vaidava

One of the most popular leisure spots for locals and visitors. At the beach of Vaidava lake there's a visitor-friendly place of leisure and picnics, WCs, a volleyball court and a playground specially suited for children. In summer, you can enjoy a ride on a boat or a SUP board offered by *VaidavEži*, and treat yourself with refreshing drinks and delicious snacks from the *Gardu Muti summer house*.

Vaidava
GPS 57.4333729, 25.2843345

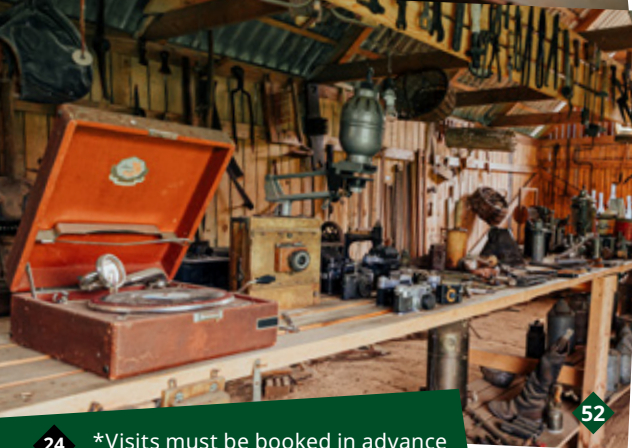


51

51* Vaidava Ceramics

A family-run company that has been crafting beautiful and functional design tableware since 1980, using the world's oldest clay — Devonian clay. Visitors can take part in a hands-on ceramics workshop, creating their own unique design piece. A concept store offers the full range of products, while a spacious summer terrace invites guests to relax and enjoy the atmosphere at their own pace.

Ezera iela 2, Vaidava
+371 22334806, vaidava.com
GPS 57.430930, 25.288637



52

52* Meldri antique collection

Here, you can explore old tools, mechanisms, and other time-worn objects that carry the spirit of the past. Visitors are invited to listen to the stories on how these items worked and were once used in daily life. Tours and access to the antique collection are available on weekends and by prior arrangement only. Accommodation is also available in the on-site guest house.

Meldri, Vaidavas pagasts
+371 26483015
GPS 57.434155, 25.269904



53

53* Blueberry field Jaunzemnieki (VI-IX)

At *Jaunzemnieki* farm, highbush blueberries are grown with great care and love. During the berry season, visitors can pick their own blueberries, walk through the fields, get expert tips on growing berries, and enjoy peaceful moments in the fresh air surrounded by forest. Farm products are available for purchase on site.

Jaunzemi, Vaidavas pagasts
+371 26488244
GPS 57.442496, 25.231712



54

54* Silkalni

In the farm *Silkalni*, located in *Gauja National Park*, it is possible to get to know various medicinal plants, participate in the collecting process and learn to use them to improve health, as well as in the daily diet. During the visit, the hostess Zeltīte Kaviere offers to taste teas, syrups and tinctures. Products available for purchase on site.

Silkalni, Vaidavas pagasts
+371 29432176
GPS 57.438930, 25.241965



55

55* Medus kāre

At *Medus Kāre* farm, you can dive into the fascinating world of bees by observing them in the apiary and hives. Owner's Valdis stories, along with a video about bee life, help visitors appreciate the vital role honey plays in our diet, health, and daily lives. It will be worth to look into the pre-processing plant of beekeeping products and get to know the process of wax candle casting. Guests can also enjoy hot drinks and pancakes, perfectly paired with a tasting of the farm's honey and other bee products. Products available for purchase on site.

Zvirgzdi, Vaidavas pagasts
+371 28341533
GPS 57.462765, 25.245114



56

56* Barrel Museum

Here, you can explore oak barrels and traditional cooper's tools, as well as join master cooper Jānis in the hands-on experience of barrel making, uncovering the secrets of this ancient craft. The museum's owners take pride in carrying the Latvian Heritage label, as all traditional tools and techniques are faithfully preserved and used in the barrel-making process. The venue is perfect for celebrating special occasions, anniversaries, or simply enjoying a group excursion with a booked barrel-making demonstration.

Madaras, Vaidavas pagasts
+371 29268692, +371 27840493, muca.lv
GPS 57.431485, 25.201891



57



58



59

57* **Dikļi Palace**

The earliest records of *Dikļi Palace* date back to the 15th century. This cultural heritage monument invites visitors to admire historic furniture and fireplaces, along with unique paintings by Latvian artists. The manor's special atmosphere and attentive staff ensure every guest feels truly welcome. Event spaces are also available.

Dikļi
+371 26515445
diklupils.lv
GPS 57.5978665, 25.1024969

58 **Neikenkalns and open-air concert hall**

This is the birthplace of one of Latvia's most cherished folk traditions — the *Song and Dance Festival*. Today, the beautiful *Neikenkalns open-air concert hall* stands here, offering visitors a chance to experience the unique blend of nature and cultural heritage. Nearby, you can explore impressive environmental installations, including the Sound Grove perched atop the Silver Grove. Both children and adults can make music and discover the sounds of xylophones, metallophones, wind instruments, and bells. The nature concert hall is also a key stop on the newly established *Dikļi Song Festival Trail*.

Dikļi
GPS 57.594154, 25.083091

59 **Viks Fairytale Park**

Viks Fairytale Park introduces visitors to the imaginative characters created by Latvian writer Viks (real name Viktors Kalniņš) and inspires creativity. Step through the park's gates and enter a magical world of fairy tales, where you'll encounter wooden sculptures of Viks's characters crafted by the Rūrāni sculptor brothers. After wandering along the park's paths, you can enjoy a picnic in the peaceful surroundings. Children are welcome to have fun at the nearby playground.

Dikļi
GPS 57.596911, 25.098846

*Visits must be booked in advance

WHERE TO EAT



31

29 **Mazais Ansis**

Ansiši, Kocēnu pagasts
+371 29134890
GPS 57.464752, 25.256469

30 **Gardu Muti summer house (VI-VIII)**

Parka iela 20, Vaidava
+371 25417000, valmiermuiza.lv
GPS 57.433297, 25.283241

31 **Promenāde (V-IX)**

Alejas iela 1, Kocēni
+371 28019924, promenade.mozello.lv
GPS 57.523359, 25.335282

24 **Mazais Ansis**

Ansiši, Kocēnu pagasts, +371 29134890
GPS 57.464752, 25.256469

25 **Bestes apartments**

Bērzu iela 5, Kocēni, +371 26428639
GPS 57.515055, 25.343683

26 **Miera osta**

Miera osta, Kocēni, +371 26450050
GPS 57.525827, 25.324822

27 **Lauviņas**

Lauviņas, Kocēnu pagasts, +371 24001750
GPS 57.525786, 25.323395

28 **Vakarvēji (V-X)**

Vakarvēji, Kocēnu pagasts, +371 29424458
vakarveji.lv, GPS 57.515288, 25.261567

29 **Pilskalni**

Pilskalni, Kocēnu pagasts, +371 29299268
GPS 57.461244, 25.269001

30 **Meldri**

Meldri, Vaidavas pagasts, +371 26483015
GPS 57.434155, 25.269904

31 **Leimaņi**

Leimaņi, Vaidavas pagasts, +371 26604673
GPS 57.429783, 25.334583

32 **Caunītes (V-X)**

Caunītes, Vaidavas pagasts, +371 29408146
baili.lv, GPS 57.398104, 25.380843

33 **Lillyhofa**

Brīvēznieki, Bērzaines pagasts
+371 28644558, GPS 57.636295, 25.191963

34 **Mežurgas**

Mežurgas, Dikļu pagasts, +371 26555136
GPS 57.596540, 25.105651

More: visit.valmiera.lv

WHERE TO SLEEP



30



25



34

27

USEFUL INFORMATION

OUTDOOR EQUIPMENT RENTAL

60 **Vaidaveži** (boats, SUP boards) Parka iela 20, Vaidava, +371 28805077, ezi.lv
GPS 57.433372, 25.284334

FISHING

Fishing regulations and licenses



SOUVENIRS

Origin - Valmiera Region



26

BURTNIIEKI

and surroundings



40 Camping Ezerpriedes (V-X)

The campsite is located in a scenic location on the steep shore of lake Burtnieks. Overnight in the camping houses will allow you to enjoy a peaceful rest, while lake Burtnieks will provide you the power of its waves and the mysterious glow of the sunset. The magic of lake Burtnieks can be enjoyed by going on a boat trip, catamarans, SUP boards. The campsite will be perfect for both travelers who want to enjoy a relaxing holiday by the lake and enthusiastic anglers. Here it is possible to organize both weddings and celebrate other events in larger and smaller companies.

Ezerpriedes, Burtnieku pagasts
+371 29461455
ezerpriedes.lv
GPS 57.732728, 25.292900

61 Lake Burtnieks

Lake Burtnieks is the fourth largest lake in Latvia. It stretches 13,5 km in length, with an average depth of 2,4 m and a maximum depth of 4,3 m. 23 rivers and streams flow into the lake, with only one outflow — the Salaca River. Known as one of Latvia's most legendary lakes, Burtnieks offers stunning views and, in the right conditions (especially in spring and autumn), a chance to witness the northern lights. In warm seasons, visitors can enjoy various water activities. The lake is home to over 20 fish species, and licensed fishing is available. The most sought-after catch is the Burtnieks zander — the so-called king of the lake, prized by all anglers.

Burtnieki
GPS 57.6988656, 25.2766008

62* Hemp farm Adzelvieši

Hemp is grown on a large area in the farm fields, from the seeds of which, according to an old cooking tradition, hemp relish is made. Here you can see a Latvian homestead, taste the hemp relish, participate in the milling of the town's barley malt, have a look into the hemp drawer of the most remarkable Latvian, folklorist *the father of the Dainas*, as well as learn about long-forgotten trade skills. Products available for purchase on site.

Adzelvieši, Burtnieku pagasts
+371 29253507
adzelviesi.lv
GPS 57.732352, 25.329311

TOP SIGHTS



WHAT TO SEE AND DO



63

63 Burtnieki Manor park

The park was started by the Schröder family around 1860 and is a national nature conservation site. There are large stairs in the park, their steps are made of one-piece, Finnish granite, specially brought to Latvia (each step is 4,3 m long). There are 70 species of trees and shrubs in the park. There is a stage and 2 linden alleys in the territory of the park – *Love and Sigh Alleys*.

Burtnieki
GPS 57.6975809, 25.2775272

64 Visrags Nature trail

The *Visrags Nature Trail* has been established in the *Lake Burtnieks Meadows Nature Reserve*. It starts at the Silver Gate of the Burtnieki Manor Park, leading through the park to the floodplain meadows of *lake Burtnieks* and *Ēķinupe*, which is an internationally important nesting place for protected birds. One of the stops on the trail is the viewing tower, from which you can see the floodplain meadows and the south-eastern shore of the lake, where the tower of the stately Burtnieki church stands. There are an interactive information stands on the trail, which will allow both young and old to test their knowledge about nature.

Burtnieki
GPS 57.698035, 25.276864



64

65* Cruise ride on the pontoon boat Made Marija (V-X)

Take an unforgettable trip on the lake Burtnieks by boat. For private trips, by agreement, the offer includes snacks and grilled zander from the lake Burtnieks, themed boat decorations for a photo session and other activities. It can accommodate up to 15 people at a time. Group trips must be booked in advance.

Burtnieku centra laivu kanāls, Burtnieki
GPS 57.698294, 25.269663
Matīšu peldētava, *Asari*, Matīšu pagasts
GPS 57.719989, 25.213550
+371 29456900, +371 29214318



65

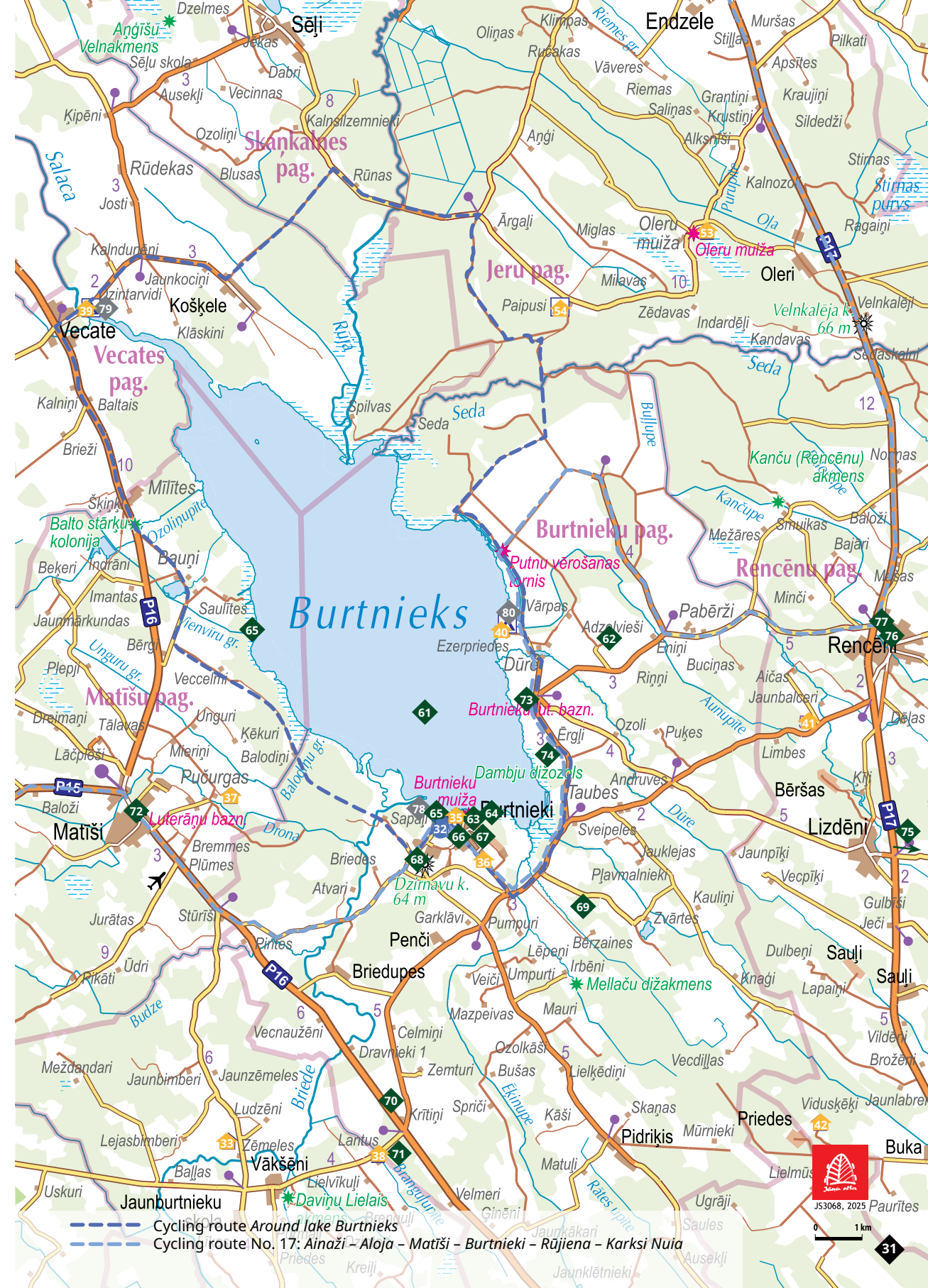
66* Horse farm in Burtnieki

The oldest and the largest stud farm in Latvia. The stud farm keeps about 200 horses that graze in the scenic nature reserve meadows on the shores of the lake Burtnieks and its surroundings. Groups of travelers can go on a tour of the stud farm and try or develop their riding skills outdoors or in an arena. It is possible to rent a horse for photoshoot sessions.

Ozolu iela 13, Burtnieki
+371 27840096
GPS 57.693368, 25.273454



66





67

67* Saules Rasa flower water tasting (V-IX)

Groups are invited to enjoy the tasting of the scents of the flower waters of *Saules Rasa* and a walk in the Zenta Skrastiņa's garden, learning about the positive effects of plants on human health. It is possible to buy *Saules Rasa* flower waters on location.

Jaunatnes iela 23, Burtnieki
+371 28606721
saulesrasa.lv
GPS 57.692484, 25.279318



68

68* Kalndzirnavas

The Dutch-style windmill, built in 1814, stands on Dzirnava Hill (64 m above sea level). From the nearby rest and viewpoint area, visitors can enjoy sweeping panoramic views over the stunning lake Burtnieks. Informational stands share the mill's rich history and its journey through time. *Kalndzirnavas* is a perfect stop for tourist groups, cyclists, hikers — and a picturesque location for wedding photos. Guided tours are available by prior arrangement.

Kalndzirnavas, Burtnieku pagasts
+371 29391593
kalndzirnavas.lv
GPS 57.688672, 25.260352



69

69* Gredzenmuiža

A nature-friendly lifestyle is deeply valued here, and the farm's offerings change with the seasons, in harmony with natural cycles. Only local plant-based dyes are used in the wool dyeing process. Goat's milk products are available in the warm season, while *goat's milk caramel* can be enjoyed year-round. Spring is especially fun for young visitors, with the chance to pet baby goats. Seasonally, visitors can purchase goat's milk products, blackcurrant jam, herbal teas, and wool goods. All year round, you can join a *goat therapy tour*, try yarn dyeing, learn cheese tying, or even go hiking with goats.

Gredzeni, Burtnieku pagasts
+371 29336022
gredzenmuiza.lv
GPS 57.684193, 25.307351



70

70* Martin's honey (VI-XI)

During the tour, the host introduces the beekeeping processes, starting with a story about the use of production technologies from ancient times to the present day, and ending with delicious pancakes with honey and a cup of warm tea. It is possible to purchase farm produce on site, while a self-service honey cabinet is available daily.

Krītiņi, Burtnieku pagasts
+371 25571394
GPS 57.640326, 25.252665

71* Farmstead Lantus

The farmstead is an ideal place to rejuvenate both body and mind — unwind in the sauna, enjoy various spa treatments, relax in the bathhouse, or take a refreshing dip in the backyard pond. Those who prefer a more active stay can take part in seasonal sports activities. Celebrations can also be arranged, combining delicious meals with rustic charm — whether for a small gathering in the sauna house or a larger event in the *Lantus shed*.

Lantus, Bērzaines pagasts
+371 29214406, laukumaja.lv
GPS 57.632997, 25.242386



71

72* Saint Matthew's Church in Matīši

The Baroque-Gothic church, built in the 1680s, stands in the heart of Matīši. Inside, visitors will find an altarpiece depicting *Christ on the cross*, while the main entrance is adorned with a vestibule featuring two palm branches, a royal crown, and the monogram of Swedish King Charles XI. The church also houses a functioning organ, built in 1867 by renowned German organ builder Friedrich Ladegast, still played during services and concerts. Guided tours are available by prior arrangement, including the opportunity to climb the church tower.

Valmieras iela 3, Matīši
+371 26199854 (guided tours)
+371 26030000, +371 26439263, matisubaznica.lv
GPS 57.700057, 25.159734



72

73* Burtnieki Church and the rectory

One of the most remarkable examples of late Gothic and Baroque architecture in Vidzeme, this stone church, dedicated to St. Mary, was built between 1283 and 1287. In 1654, the church was damaged by fire but was fully restored later. Church records housed in the clergy building contain birth data dating back to 1720. By prior arrangement (with a donation), visitors can climb the church tower to enjoy panoramic views of *Lake Burtnieks* and the surrounding countryside.

Burtnieku pagasts
+371 26479451
GPS 57.7196701, 25.3007286



73

74* Steep shore trail of Lake Burtnieks

This less than 1 km circular nature trail is located in the *Lake Burtnieks Meadows Nature Reserve*. It begins at the Burtnieki Old Cemetery and leads through the lake's floodplain meadows, offering scenic views of the legendary lake and its unique sandstone outcrops — the only formations of their kind in Latvia, shaped by wave erosion. Along the stretch that runs right next to the lake, visitors can experience the raw beauty and closeness of untamed nature.

Next to the Burtnieki Old Cemetery, Burtnieku pagasts
GPS 57.713841, 25.302471



74



75 Ēvele Church

The church, built in the 19th century, is notable for its loud organ. The church is a well-preserved example of the architecture of classicist sacred buildings in Vidzeme. During the summer season, you can climb the church tower and view the interior at any time.

Ķesterleja, Ēvele
+371 26454301
GPS 57.693101, 25.555821



76* Nursery Zaļā oāze (IV-XI)

A family company with more than 20 years of experience – *Zaļā oāze* – is not only a nursery, but also a place to give joy to the soul, to gain energy and to delight the eyes. Every visitor here can find the most suitable plants, ecologically clean vegetables and fruits, combining it with admiring the variety and splendor of plants. Guided tours are available.

Pumpura iela 1A, Rencēni
+371 26126898
zalaoaze.weebly.com
GPS 57.725709, 25.430582



77* UzKūko Kitchen

UzKūko Kitchen (UzKūko virtuve) is the place of creative expression of homemaker Aneta Ādamsons, where various types of cakes and other delicacies are made. From delicate French mousse cakes to macaroons and eclairs. The host of the world of sweet art will help you learn the tricks and tips in a master class. Pop-up cafe is opened once a month, where you can taste a piece of everything.

Valmieras iela 12, Rencēni
+371 28312663
GPS 57.729286, 25.430525

*Visits must be booked in advance

SOUVENIRS

 **Origin – Valmiera Region**



FISHING

 **Fishing regulations and licenses**



OUTDOOR EQUIPMENT RENTAL

78 **Vidzemes laivas** (boats, SUP boards) Ezera iela 11A, Burtņieki, +371 29127198, +371 25631060
vidzemeslaivas.lv
GPS 57.697687, 25.268339

79 **Ezerupe** (boats) *Laivu bāze Ezerupe*, Vecates pagasts, +371 25660000
ezerupe.lv, GPS 57.795854, 25.145496

80 **Ezerpriedes** (V-X) (boats, SUP boards, catamarans)
Ezerpriedes, Burtņieku pagasts, +371 29461455
ezerpriedes.lv, GPS 57.732728, 25.292900

32 **Burtņiekrasts**
Ozolu iela 10, Burtņieki
35 +371 26300430
GPS 57.696313, 25.274832

36 **Atpūtas namiņš**
Lāčplēša iela 3A, Burtņieki
+371 29121375
atputasnamins.lv
GPS 57.693506, 25.281083

37 **Pļavas vidū**
Zeltiņi, Matīšu pagasts
+371 26478476
plavasvidu.lv
GPS 57.702942, 25.186439

38 **Lantus**
Lantus, Bērzaines pagasts
+371 29214406
laukumaja.lv
GPS 57.632997, 25.242386

39 **Ezerupe**
Laivu bāze Ezerupe, Vecates pagasts
+371 25660000
ezerupe.lv
GPS 57.795854, 25.145496

40 **Ezerpriedes (V-X)**
Ezerpriedes, Burtņieku pagasts
+371 29461455
ezerpriedes.lv
GPS 57.732728, 25.292900

41 **Krāģīši**
Krāģīši, Rencēnu pagasts
+371 26399772
GPS 57.711709, 25.405613

42 **Viduskēķi**
Viduskēķi, Valmieras pagasts
+371 29361600
GPS 57.638451, 25.403074

More: visit.valmiera.lv

WHERE TO EAT AND SLEEP



TOP SIGHTS



33

33 Cafe Būda

The *cafe Būda* is located in a beautiful place. From May to September, the cafe's offer can be enjoyed on the scenic summer terrace on the very shore of the Salaca river, which offers a wonderful view of both the river and the bridge over it. The rest of the time, guests are invited to enjoy meals and drinks in the cozy rooms of the historical *Buck pub*. A great place to enjoy a meal with family or friends. The menu offers something for everyone — from burgers and soups to refined desserts and drinks. A kids' corner is also available for the youngest visitors.

Rīgas iela 17, Mazsalaca
+371 27746538
ediendaris.lv
GPS 57.857052, 25.053606



81

81 Skaņaiskalns Nature park

Skaņaiskalns Nature park is a 3 km long trail that covers the most beautiful section of the Salaca ancient valley with sandstone outcrops, caves, springs and a pine forest. Going along the trail, you can see such unusual natural formations as Werewolf Pine, Devil's Stone, Angel's Cave, Dream Stairs, Devil's Cave, The Sour Vessel, Dwarf Trail, Carnation Cliffs, Devil's Pulpit and Skaņaiskalns. Entry and access to the nature park by motorized vehicle is allowed with a ticket purchased via the *Mobilly* app or at the *Skaņaiskalns Nature Park Visitor Center* (during the summer season).

Parka iela 36, Mazsalaca
+371 28374774
GPS 57.8631130, 25.0274766



82 46

82* 46 Lamb Club

The *Lamb Club* is a farm located less than 4 km from Mazsalaca. It will be interesting both for families with children and for larger groups of colleagues or friends. The sheep live here in a real club and they are being watched by a real shepherd dog. During the visit, you can both hug and feed the newborn lambs with a bottle of milk, take photos, as well as watch the sheep in their daily lives from the visitors' balcony or in nature. The best time to visit is from March to May, when the young lambs are born. Guided tours and creative workshops available.

Keiķi, Skaņkalnes pagasts
+371 22144936
jeruklubs.lv
GPS 57.828404, 25.064586

36

*Visits must be booked in advance

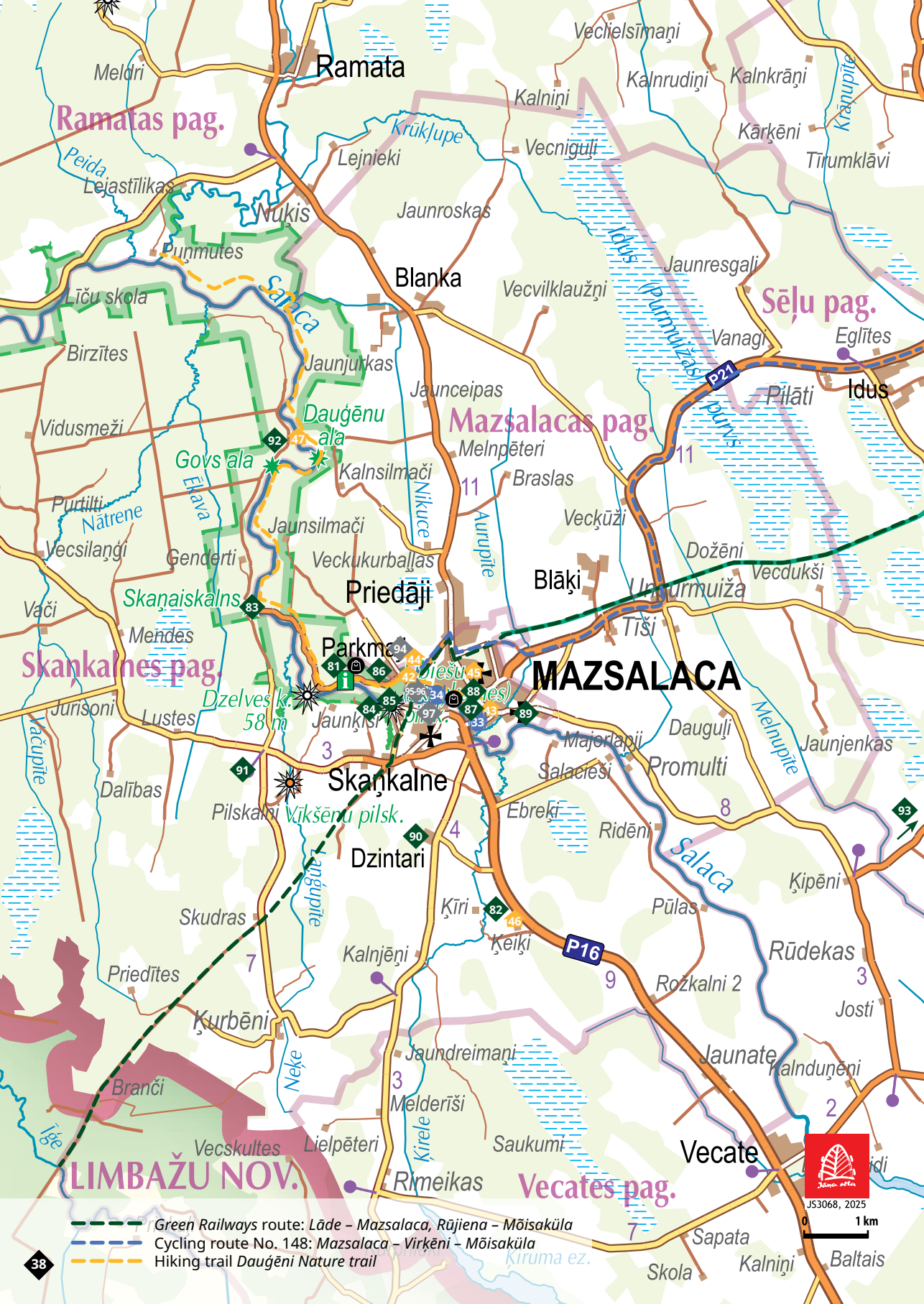
MAZSALACA

and surroundings



81

37



WHAT TO SEE AND DO

83 Dauģēni Nature trail

Dauģēni Nature trail is one of the longest landscaped nature trails in Latvia. Its length in one direction is about 10 km. Here you can enjoy the glorious landscapes of the ancient Salaca valley with red mid-Devonian sandstone outcrops, set-aside meadows and streams, as well as see nature in its silence, peace and pristine.

Starting point at the Skaņaiskalns Cliff
GPS 57.873804, 24.997204



84 Liiv's Castle Mound and open-air stage

An ancient Liiv's Castle Mound inhabited in the late Iron Age. In ancient times, a stately Liiv's wooden castle stood here. Throughout history the castle mound has also been called Oglu hill and Skulberģu (Kolbergas) castle mound. The castle mound is located in a scenic location, surrounded by Salaca river on one side and Dambjupīte river on the other. Nowadays, there is an open-air stage at the top of the castle mound, which gathers people for merry summer balls. Beautiful walking trails wind along the stage, leading to the nearby Valtenberģi Manor, Carnation Cliff and *Dauģēni Nature trail*.

Lībiešu pilskalns, Skaņkalne
GPS 57.859558, 25.032097



85 Pedestrian bridge over the Salaca river

A cable-stayed bridge crossing the Salaca river, a favorite of boaters. The bridge connects Mazsalaca with Skaņkalne, the Valtenberģu Manor complex with the Liiv's open-air stage. The bridge is like a gate to the treasures of the Salaca river such as sandstone rocks. It experiences the dance steps of summer ball visitors and sled pullers in the winter.

Skaņkalne
GPS 57.860623, 25.035635



86 Valtenberģi Manor complex and Museum of Mazsalaca

The Museum of Mazsalaca is located in the old Valtenberģi Manor - a fine example of late Classicism located on the banks of the Salaca River. The manor complex was built between the late 18th and mid-19th century, with some additional buildings added later in the 19th century. Visitors can explore a variety of unique exhibits, including a bell collection, wooden sculptures by Walter Hirtte, hunting trophies, historic family trees, and a charming display of 1,300 souvenir mice.

Parka iela 31, Mazsalaca
+371 26519165
GPS 57.862438, 25.036565





87

87* Vidusmeži Ceramics

Vidusmeži is a home, a brand and a space for creative expressions, where high-quality untamed ceramics with character and added value, provided by the natural wealth of the Salaca river valley, are created. Exploring primitive wood burning and experimenting with different ceramic and glass materials in an electric kiln, the hand-made ceramics depict the tones and patterns of nature, which the integration of local clays and pigments into the ceramic works helps to reveal. At the Vidusmeži workshop, visitors can take part in the creative process of making ceramics and purchase the finished products.

Rīgas iela 17, Mazsalaca
+371 25908703
vidusmezi.com
GPS 57.857136, 25.053863



88

88* Mazsalaca Crafts House

Opposite the old *Buck pub* is a place where creativity and craftsmanship go hand in hand. The crafts house promotes and improves the values of the intangible cultural heritage in the skill of making patterned double gloves, weaving on a loom and ceramics. Visitors can learn the unique technique of double-knitted gloves, meet local artisans, and occasionally explore exhibitions curated by master craftspeople.

Rīgas iela 10, Mazsalaca
+371 29179179
GPS 57.857397, 25.054644



89

89* Mazsalaca St. Anna's church

Mazsalaca St. Anna's church is best known for its pointed 58,6 m tower, visible from afar. The oldest part of the church, with 1,5 m thick stone walls, dates back to the 14th century. In 1890, a Gothic-style cruciform extension was added — remarkably completed in just one summer. Inside, visitors can see a preserved 18th-century Baroque altar with a painting of the *Holy Supper* by an unknown artist. The old Romanesque stone walls now form the altar space of the newer church, blending past and present architecture. Visitors may also climb the tower (entry by donation).

Baznīcas iela 24, Mazsalaca
+371 26323723
GPS 57.858595, 25.066378



90

90* Farm Dzintari

In the *Dzintari* farm you can see old Soviet-era cars and other vehicles that are rare today. There will be something to see and hear here, as the attractive host will answer all your interesting questions and tell stories about the vehicles here, making the tour more exciting.

Dzintari, Skaņkalnes pagasts
+371 29459618
GPS 57.845034, 25.041632



91

91* Gudzoni cave

This natural monument features a cave and an exposed sandstone outcrop from the Middle Devonian Burtnieki Formation. The main passage of Gudzoni Cave stretches approximately 18 meters, with a total length of 27 meters. Together with the cave, the sandstone cliffs, the wild floodplain of the *Laņģupīte* stream, and the ancient valley slope form a landscape of striking, rugged beauty.

Gudzoni, Skaņkalnes pagasts
GPS 57.850928, 25.006031



92

92* Team building event Gani Aitu

Gani aitu (Herd the Sheep) is a unique, first of its kind team-building event in Latvia. It invites participants to discover new sides of themselves, connect with teammates in unexpected situations, and build a strong sense of community — all in the great outdoors. To succeed, the team must work together to overcome a series of challenges and achieve a shared goal. Perfect for work teams, families, or groups of friends looking for a fun and meaningful experience.

Rantiņi, Skaņkalnes pagasts
+371 29395635
GPS 57.896369, 25.008954



92

93* Sēļi Manor complex

The old manor park with a pond and the *Island of Love* encourages us to dream about the life of the manor, which in ancient times was associated not only with economic activity, but also with the cultural life corresponding to the era. In the buildings of the Sēļi Manor complex you can see a historical exposition about Sēļi and the surrounding manors, a unique collection of porcelain figurines, as well as other professional and amateur art exhibitions. Guided tours are available.

Sēļu muiža, Sēļu pagasts
+371 27909112
GPS 57.8513856, 25.212949



93

USEFUL INFORMATION



95 81



94 81

OUTDOOR EQUIPMENT RENTAL

- 94 ErenPlays** (boats, SUP boards)
Miera iela 9, Mazsalaca
+371 29519966
erenplays.lv
GPS 57.865861, 25.052181
- 95 X centrs, Pa Salacu** (boats, SUP boards, bicycles)
Gustava Ērenpreisa iela 2, Mazsalaca
+371 29453079, +371 29320359
xcentrs.lv
GPS 57.859980, 25.055515
- 96 Ferrits** (boats, SUP boards)
Gustava Ērenpreisa iela 2, Mazsalaca
+371 29434534
GPS 57.859980, 25.055515
- 97 Salacas kanoe** (boats, SUP boards)
Libieši 2, Skaņkalne
+371 29286988
salacaskanoe.lv
GPS 57.85817, 25.05063

FISHING

-  **Fishing regulations and licenses**



SOUVENIRS

-  **Skaņaiskalns Nature Park Visitor Center (VI-VIII)**
Parka iela 36, Mazsalaca
+371 28374774
GPS 57.863246, 25.026198
-  **Vidusmeži Ceramics***
Rīgas iela 17, Mazsalaca
+371 25908703
vidusmezi.com
GPS 57.857136, 25.053863

-  **Origin - Valmiera Region**



WHERE TO EAT



34

- 33 Būda**
Rīgas iela 17, Mazsalaca
+371 27746538
ediendaris.lv
GPS 57.857052, 25.053606

- 34 Miķis**
Pērnavas iela 5, Mazsalaca
+371 64251959
GPS 57.861294, 25.054508

- 42 Miķis (III-XI)**
Pērnavas iela 5, Mazsalaca
+371 64251959
GPS 57.861294, 25.054508

- 43 Salisburg residence**
Pērnavas iela 7-8, Mazsalaca
+371 26685222
GPS 57.861686, 25.054128

- 44 Purinmalas**
Miera iela 9, Mazsalaca
+371 29519966
GPS 57.865861, 25.052181

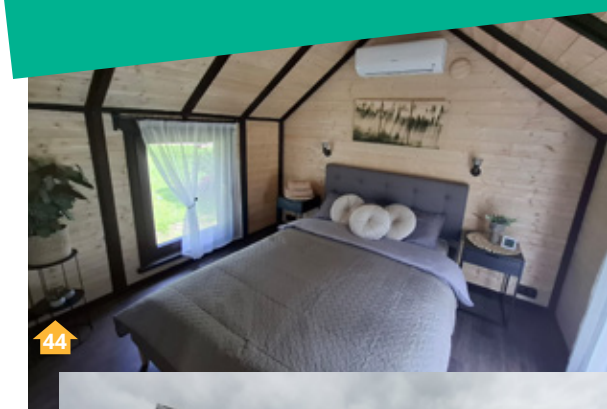
- 45 Mazsalaca Baptist church**
Lielā iela 5, Mazsalaca
+371 29122850
GPS 57.864027, 25.056498

- 46 Lamb Club glamping (IV-X)**
Keiķi, Skaņkalnes pagasts
+371 22144936
jeruklubs.lv
GPS 57.828404, 25.064586

- 47 A night in the forest – Tent in the trees (V-IX)**
Rantiņi, Skaņkalnes pagasts
+371 29395635
GPS 57.896369, 25.008954

More: visit.valmiera.lv

WHERE TO SLEEP



44



43



46

43

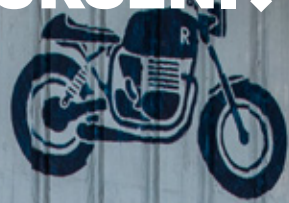
RŪJIENA

and surroundings

NAUKŠĒNI

RŪJIENA

SAPNU
SALDĒJUMS



98* Ice cream factory Rūjienas Saldējums

The *Rūjienas Saldējums* producers are also called *cloud pushers*. Probably that's why the ice cream made in Rūjiena tastes so delicious. When visiting the factory, you will be able to participate in the preparation of ice cream, taste the diverse tastes of the famous *Rūjienas Saldējums*, watch the production processes through a video film and learn interesting stories.

Upes iela 5, Rūjiena
+371 29403494
rujienassaldejums.com
GPS 57.895925, 25.327123

99 Rūjiena Exhibition hall and the Japan room

Only art pieces by Rūjiena residents or artists connected to Rūjiena are on display in the exhibition hall. One of the rooms features portraits of famous film actors, drawn by Jānis Vaivars and accompanied by autographs he personally collected — a total of 109 actors are depicted. Also on display is a wooden Lielvārde belt, crafted by students of Rūjiena Art School. The *Japan room* showcases gifts from friends in Japan. Exhibition hall's manager and local guide Līga Siliņa will share fascinating stories about Rūjiena, its people, friendship with Japan, and the local dialect.

Upes iela 7, Rūjiena
+371 26381413
GPS 57.895848, 25.325675

100* 52 Koņi mill

Koņi mill is the only place in Latvia, where grain is grinded, wool is spinned, blankets are sewed and pillows stuffed with Latvian sheep wool — all of that in one location. Here you can go on a tour of the mill, during which you can follow the path of the grain as it turns into flour, see the retro-style machines that are still doing their job — plucking, carding, spinning and wool yarn in skeins. Handicraft workshops and masterclasses are available, along with event venue and a guest house.

Koņu dzirnavas, Koņu pagasts
+371 26424567
konudzirnavas.lv
GPS 57.943725, 25.372408

*Visits must be booked in advance

TOP SIGHTS



98



99



100 52

WHAT TO SEE AND DO



101



102



103



104

101 The floodplain trail of the river Rūja

The circular trail winds along the bank of the Rūja River for about 1 km and is perfect for leisurely nature watchers. During the walk you will be able to see the shores rich in old rivers. In terms of biodiversity, the area is part of the *North Vidzeme Biosphere Reserve*.

Valdemāra iela 12, Rūjiena
GPS 57.893197, 25.325801

102 Terneja Park

Terneja Park, located in the heart of Rūjiena, is known for its rich dendrological diversity. In spring, visitors are especially drawn to its exotic beauty — most notably, the sakura garden in full bloom. A leisurely walk reveals not only remarkable plant life but also monuments and memorials that reflect Rūjiena's history. Notably, the park once served as a cemetery in the late 18th century after Empress Catherine II banned burials near churches. It was cleared in 1952. Today, the park hosts various cultural, artistic, and educational events throughout the year.

Ternejas parks, Rūjiena
GPS 57.89827, 25.32957

103 Rūjiena Society of Craftsmen Rūzele



By visiting *Rūjiena Society of Craftsmen Rūzele* you can learn the stories of traditional Rūjiena dishes and taste dishes that are still honored both daily and during the holidays, and have lived from generation to generation. The association is admitted to the *European Culinary Heritage Network*, proving the connection of the food produced or prepared by the participant to the specific region, highlighting its special flavors.

Skolas iela 8A, Rūjiena
+371 26397236
GPS 57.898124, 25.333439

104 Gladiolus garden Gladiolapluss (VIII-IX)

In the *gladiolus garden* you can see more than 450 gladiolus varieties from breeders from Latvia, Lithuania, Ukraine, Czech Republic, Canada, the USA and other countries. The visit will be accompanied by the stories of the owner Modris, for whom the cultivation of these ornamental plants has been a lifelong love and activity for more than 30 years.

Zemeņu iela 18, Rūjiena
+371 28822895, gladiolapluss.lv
GPS 57.903730, 25.329280

*Visits must be booked in advance



JS3068, 2025
0 1 km



105

105* St. Bērtulis Church in Rūjiena

Church was built between 1259 and 1263. It is one of the oldest and largest churches in Vidzeme. The history of the church is associated with continuous destruction and restoration works. With a pre-booked guide, you can explore the church's architecture, discover its restored historical features, learn about its rich history, and even climb the church tower.

Rīgas iela 32, Rūjiena
+371 27817494
bertuladraudze.lv
GPS 57.892736, 25.341665



106

106* Creative workshop Ziepu Pērles

At *Ziepu Pērles (Soap Pearls)*, unique soaps are handcrafted from natural materials — from start to finish. During your visit, you'll learn the art of making beautifully scented and creatively shaped soaps. Owner Evija will introduce the workshop's creations, share their uses and stories, and guide you through a hands-on experience. Creative workshops are available, and you can take your handmade soaps home with you. Products are also available for purchase on site.

Pentes iela 2 (2nd floor), Rūjiena
+371 28783662
GPS 57.888691, 25.361864



107

107* Blacksmith's workshop Kalnmesteri

Here you will be able to see with your own eyes the extensive exposition of wrought iron, which will be accompanied by the attractive stories of the enthusiastic owner of the *Kalnmesteri*, Edvīns. Participation in the blacksmith's smithy will make the visit more unforgettable. Wrought iron products can be purchased on site.

Rīgas iela 65D, Rūjiena
+371 29481759
GPS 57.887553, 25.365782



108

108* Farm Pilsgravas (V-XI)

Pilsgravas is located in a beautiful place next to the Rūjiena castle mound and the Rūja river. During the visit, the hosts will show off their organic farming, speak more about goat farming and make different types of cheese. Delicious *Pilsgrava* cheeses, which have received multiple awards, will also be available to taste. Farm products are available for purchase on site.

Pilsgravas, Koņu pagasts
+371 26219024
GPS 57.881512, 25.372125

109* Farm Stūri (VI-IX)

Thanks to the owners dedication and love for the land, a thriving farm has been built — one that honors natural and organic principles. During strawberry season, visitors can discover a surprising variety of strawberries and taste them fresh from the garden. In late summer, sea buckthorn and peaches ripen into golden hues. The hostess is happy to share stories about daily life on the berry farm. Farm products are available for purchase on site.

Stūri, Koņu pagasts
+371 29176158
GPS 57.884833, 25.376060



109

110* Flower garden Cīruļi (V-X)

The magnificent flower garden *Cīruļi*, boasts a rich collection of peonies, perennials, phlox and lilies. In recent years, owners can be proud of plants that are not found in every garden. The family has always been united by a love of flowers, so the well-kept garden around the house and the tour led by the hosts will delight the eyes and mind of every visitor.

Cīruļi, Jeru pagasts
+371 26432025, +371 29328444
GPS 57.866700, 25.366506



110

111* Oleri Manor

Arriving at *Oleri Manor*, feel the old way of life of the old country manor. The creative family of artists – Kārlis and Ieva Zemīši, who currently manage the manor – kindly open the doors of their house, offering excursions around the manor and landscape garden, as well as organizing concerts and *Garden story (Dārza stāstu)* events.

Oleru muiža, Jeru pagasts
+371 29224494
olerumuiza.lv
GPS 57.809307, 25.362648



111

112* Motorcycle track Eriņi

On the *Eriņi motorcycle track* you will be able to experience an adrenaline-filled adventure while riding the track in a motorcycle with a sidecar. During the tour led by the hosts, you will be able to learn interesting stories, watch a film, as well as see a motocross themed exhibition. Here you can enjoy a unique sauna experience in a metal barrel.

Lejeriņi, Koņu pagasts
+371 26514524
GPS 57.903630, 25.361319



112

*Visits must be booked in advance



113

113* Sweet arts studio Pērles

A visit to the *Sweet arts studio* invites you into the delicious world of chocolate, guided by the studio's owner and master chocolatier, Dace Pastare. Learn how fine chocolates are made and discover the secrets to truly savoring them for the fullest flavor experience. The visit includes chocolate tasting and a hands-on masterclass in decorating, painting, shaping, and molding sweet creations. After the workshop, you can purchase a selection of handcrafted chocolate delicacies on site.

Pērles, Ķoņu pagasts
+371 29249246
perlesweets.lv
GPS 57.895032, 25.394893



114

114 Kābele Castle Mound trail

About 3 km long circular trail leads to the ancient Latvian castle mound on the bank of the river Rūja. The path of the Kābele Castle Mound is perfect for lovers of short walks. Going through it, the view will open such important evidence of cultural history as the Naukšēni Manor complex, the ruins of the chapel of Baron von Grothe, as well as wooded natural landscapes. In the leisure place of the castle mound you can take a break, while from its hills you can watch the landscape that opens onto the Rūja river. The trail starts by the Naukšēni Manor.

Naukšēnu muiža, Naukšēni
GPS 57.8840296, 25.4295792



115

115* Naukšēni Manor

The manor house, barn, cheese shop or clock tower and the park are cultural monuments of national significance. You can see the buildings from the outside by walking through the manor park. If you want to learn more about the history of the manor, see the manor hall, as well as look into the cheese shop and barn, you need to apply for a guide in advance. Venues available for events.

Naukšēnu muiža, Naukšēni
+371 29293630, pilis.lv
GPS 57.883568, 25.447049



116

116* Naukšēni winery

Naukšēni is engaged in winemaking for the second generation, achieving great success in local and international winemaking competitions over the years. While visiting the winery, the owner Jānis Baunis will introduce the work of the factory and give a taste of delicious wines made from local berries and fruits, *Paradise apple ciders* and the *Strong storers*. Products are available for purchase on site.

Saulesvārti, Naukšēnu pagasts
+371 28628530
nauksenuvini.lv
GPS 57.884778, 25.447889

117* Naukšēni brewery

Built in 1881, the historic brewery has withstood the test of time. While beer is no longer brewed here, traditional rye malt is still made — soaked in baronial-era vats, sprouted in vaulted cellars, and dried in a centuries-old wood-fired kiln. During the tour, you'll uncover the secrets of the old brewery, take part in the malt-making process, and visit the attic where brewers once lived for over 100 years. For the brave, a unique adventure awaits — a 6-meter descent into the ancient cellar. An optional add-on: a warm family-style meal with hearty soup, pancakes, live saxophone music, and the charm of a waltz.

Krāces, Naukšēnu pagasts
+371 27334797
sianaukseni.lv
GPS 57.885186, 25.450822



117

118 Naukšēni cilvēkmuzejs

The *Naukšēni cilvēkmuzejs* tells about the events of the history of North Vidzeme and especially residents of Naukšēni through the experience of the local population. Here you can understand the connections between the destinies of previous generations and historical events, look at the evidence of tangible and intangible history. The museum's exposition is unique in that it is not hidden in glass showcases.

Doktorāts, Naukšēni
+371 26452037
GPS 57.884657, 25.457948



118

119 Jēči Mill trail

The *Jēči Mill trail*, located in the *North Vidzeme Biosphere Reserve*, showcases diverse landscapes — from fields and forests to wild pastures and wetlands. Along the way, you'll discover unique natural and cultural landmarks like the Jēči Bowl Stone, Pugu Stone Piles, Garo Hill, ancient trees, and beaver habitats. The trail also passes species-rich meadows, where wild horses and taurine cattle roam freely.

Naukšēnu pagasts
GPS 57.842899, 25.447327



119

120 Ķoņi Hill

Ķoņi Hill is the largest drumlin in Latvia and Eastern Europe, formed by retreating glaciers. It stands at 92,6 meters above sea level, with a relative height of 35 meters, stretching 9,6 km in length and 2,4 km in width. From the hilltop, you can enjoy sweeping views of the Burtņieki Valley and explore the area's rich natural and cultural heritage. Visitors can swing on a large wooden swing, relax in the *Wind Chariot* or the *God's Chair*, and walk a stone trail next to a pond shaped like the Baltic Sea.

Ķoņu pagasts
GPS 57.938620, 25.339277



120

USEFUL INFORMATION



WHERE TO EAT



WHERE TO SLEEP



Audioguide **RŪJIENA MONUMENTS**



SOUVENIRS



Atspole shop
Skolas iela 8, Rūjiena
T. +371 29406962
GPS 57.897655, 25.333444



Artavs shop
Rīgas iela 7, Rūjiena
T. +371 64263416
GPS 57.896765, 25.328916



**Origin -
Valmiera
Region**



Trīs draugi
Valdemāra iela 6, Rūjiena
+371 64263694
GPS 57.896129, 25.324801



e.d.a.
Valdemāra iela 5, Rūjiena
+371 26455565
GPS 57.896129, 25.325895



Lauvas līcis
Rīgas iela 60, Rūjiena
+371 26778322
GPS 57.886681, 25.362432



Apartments on Raiņa street
Raiņa iela 7, Rūjiena
+371 26556583
GPS 57.898887, 25.326696



Apartment 17
Brīvības iela 7-17, Rūjiena
+371 26450931
GPS 57.896759, 25.324184



Grēņi
Grēņi, Ķoņu pagasts
+371 26539913
GPS 57.906624, 25.326783



Ķoņi mill
Ķoņu dzirnavas, Ķoņu pagasts
+371 26424567
konudzirnavas.lv
GPS 57.943725, 25.372408



Oleri Manor (III-XI)
Oleru muiža, Jeru pagasts
+371 29224494
olerumuiza.lv
GPS 57.809307, 25.362648



Park Paipusi (V-X)
Paipusi, Jeru pagasts
+371 28776792
paipusuparks.lv
GPS 57.796634, 25.317548



Naukšēni Manor
Naukšēnu muiža, Naukšēni
+371 29293630
GPS 57.883568, 25.447049



Udzēni
Lejasudzēni, Naukšēnu pagasts
+371 26528965
udzeni.lv
GPS 57.923310, 25.551380

More: visit.valmiera.lv



49



52



53



48

53

52

TOP SIGHTS



121



122

41



123

54

121 **River Gauja Nature trail and wooden sculpture park**

Around 30 different wooden sculptures in honor of the raftsmen have been erected in the *Strenči Gaujmala*, so that the memories of the rafting trade, which was so widespread in these places in the past, do not disappear. As part of the annual *Gauja river Timber Rafting Festival* in May, a competition for sawing wooden sculptures is taking place, when new sculptures are being built, which will later be installed in the *Wooden Sculpture Park*. While walking along the *Gauja Nature trail*, enjoy being in nature, experience the beauty and diversity of nature, as well as see cultural and historical sites.

Strenču Gaujmala

GPS 57.623440, 25.690126

122 **Brenguļi brewery (IV-IX)**

The *Brenguļi brewery* is located in the building of the former power plant on the Abuls river, the cellars of which are used for brewing beer according to the classical method. Next to the brewery is the *Brenguļu beer garden* – a great place to enjoy Brenguļi beer in the open air on site or to take-away. The offer also includes cold and hot snacks to enjoy with beer.

Brenguļu Alus Dārzs, Brenguļi

+371 22490592

GPS 57.548485, 25.547805

123 **Wooden sculpture park and labyrinth in Beverīna (V-X)**

The 2,5-hectare open-air recreation park with more than 80 different large-format outdoor games and attractions, 5 labyrinths (the largest of which is available from the age of 18) and more than 370 wooden sculptures will appeal to both children and adults.

Arāji, Brenguļu pagasts

+371 20383303

beverinaslabirinti.lv

GPS 57.497744, 25.550157

STRENČI. SEDA. TRIKĀTA.

and surroundings



138

55



WHAT TO SEE AND DO

124* Laserpark Shooter

Lasertag is an active, cohesive and modern team game of new technology in the fresh air all year round. It is suitable for all interest and age groups – large and small, families, friends, larger groups and collectives. Fun and positive emotions vibrate during the game, playing various missions and scenarios in an obstacle arena equipped for this purpose, using special game equipment.

Miķeļi, Brenguļu pagasts
 +371 299 27 299, lazerparks.lv
 GPS 57.498973, 25.550519



125 MiniCiems (V-X)

Not far from Valmiera is a real paradise of miniatures or *MiniCiems*, which is the first theme park of its kind in Latvia. Here in one place you can see with your own eyes the miniatures of the houses, churches and other notable buildings of several Latvian manors, made on a scale of 1:25. Making miniatures is a hobby of the owner Santa, and little by little the park is being supplemented with significant and historical buildings in Latvia. The owner likes to share personal stories that connect her with each model she designs.

Paegliši, Brenguļu pagasts
 +371 26356550, miniciems.lv
 GPS 57.484144, 25.586498



126* Local farm Vīnkalni (V-IX)

At the local farm *Vīnkalni*, Italian charm meets Latvian tradition. You're welcome to enjoy a peaceful, well-kept rural setting, relax actively, and take part in an authentic Italian pizza-making masterclass. The host will guide you through the farm, sharing stories about ancient craftsmanship and showcasing a collection of antiques and furniture. Events can be held in the beautifully restored stone barn, and group catering is available.

Vīnkalni, Kauguru pagasts
 +371 29491187
 GPS 57.476993, 25.445055



127* Felting with Inga Logina

At Inga Logina's felting workshop, you'll learn to create felted bath hats, slippers, boots, and more — and try your hand at felting yourself. Locally made felt products are available for purchase.

Rozītes, Cempi, Brenguļu pagasts
 +371 28446697
 loginwool.wordpress.com
 GPS 57.504620, 25.556653



*Visits must be booked in advance



128

*** Candied fruit for gourmands Granberry**

Visit the charming farm that's home to the delicious *Granberry* candied fruit factory. Join the hostess for a flavorful tour, explore the fruit and berry fields, see how the treats are made, and enjoy tastings of healthy, vitamin-rich candied fruits, syrups, and juices. Local products are available for purchase on site.

Zarupi, Brenguļu pagasts
+371 29263439
granberry.lv
GPS 57.531531, 25.514983



129

*** Leisure center Baiļi**

Several nature trails pass by *Baiļi*, which is recognized as a *Hiker-Friendly* business. In winter, it's a popular spot for skiing and snowboarding. Events can be hosted in the yurt, and guests can also enjoy the sauna. A tube sliding track is available year-round.

Baiļi, Kauguru pagasts
+371 29284119
baili.lv
GPS 57.534189, 25.468771



130

*** Abuls Nature trail**

This scenic 11 km circular trail follows the left bank of the Abuls river, passing through forests and historic manor grounds. Starting in the center of Brenguļi village, the route winds along the river to its confluence with the Gauja, then loops back through forest paths and former manor estates. Near the *Jaunarāji* campsite, the trail leads through the charming *Love Trail (Mīlestības taka)*. The route is marked in nature with blue and white trail markers.

Brenguļu pagasts
GPS 57.547692, 25.546591



131

*** Country house Amsiņi (V-IX)**

The ancient charm of the house, its closeness to nature, and the surrounding rural peace help restore one's connection with the natural world — bringing fairy tales to life. Guided by the hostess, this becomes a conscious, musical, and deeply personal experience. During your visit, you can join a masterclass, see the great *Amsini Oak*, meet the lambs, and explore the *Sound Room*.

Amsiņi, Brenguļu pagasts
+371 29139415
amsini.mozello.lv
GPS 57.543092, 25.600828

*** Store's Delicacies - Burger Masterclasses**

The *Zvirbuļi* family runs *Stores* as a certified organic farm, specializing in raising purebred Charolais cattle and producing high-quality meat products. Guests are invited to take part in burger-making masterclasses, where, alongside crafting delicious burgers, they also learn table-setting and food preparation skills — all in a warm, friendly atmosphere. Visitors can explore the farm's rich history, meet the impressive Charolais herd, and taste farm-fresh meat delicacies prepared by the host. Farm products are available for purchase on site.

Stores, Brenguļu pagasts
+371 29101568
GPS 57.547987, 25.613369



132

*** Bath house Abulkrastu pirts**

Under the guidance of a certified bather, you can enjoy different types of sauna rituals, massages and other types of therapeutic procedures for physical and mental recovery and well-being. Before the sauna ritual, you can seek a connection with nature by walking along the coast of Abuls, observing the *Sprenu* rocks, absorbing energy from the big stones or in the nearby meadows and woods, tying your own special sauna brooms from your favorite sauna herbs.

Spreni, Brenguļu pagasts
+371 29199204
abulkrastupirts.mozello.lv
GPS 57.551159, 25.625251



133

*** Abullāči farm (VI-X)**

Abullāči farm has been cultivating blueberries for decades and, more recently, cranberries as well. Visitors are welcome during harvest season to pick fresh, delicious berries themselves. Seedlings and berries are also available for purchase on site.

Abullāči-2, Brenguļu pagasts
+371 29446454
GPS 57.554619, 25.645577



134

*** Cooking masterclass Wrap Your Own Wrap**

During the masterclass, participants can explore a world of flavors — mixing and matching ingredients to create their perfect wrap, all while picking up handy tips and tricks from an experienced chef. After tasting their delicious creations, guests are invited to enjoy the fresh air with fun outdoor games and activities. This experience is a great choice for children's parties, small private events, family gatherings, or a cheerful stop during a hike or excursion.

Pūpoli, Brenguļu pagasts
+371 29214318
GPS 57.574729, 25.556942



135



136

136* **Strenči Church**

The church was built in 1907 in the style of national romanticism, which developed within the framework of Art Nouveau. This is evidenced by the shape of the church windows and doorways, but the influence of this style is especially evident in the interior decoration of the church, where the ornamental color combines Christian and ethnographic symbols. In the church you can see a unique painting of *Christ and Peter at sea* by Indriķis Zeberīņš, but during the summer season you can glance at Strenči from the windows of the church tower.

Baznīcas iela 5, Strenči
+371 29633822
GPS 57.630152, 25.689538



137

137* **Strenči Psychoneurological hospital**

Strenči Psychoneurological Hospital is a unique cultural and historical site, featuring a rare architectural ensemble. The hospital comprises a complex of historic buildings and a park that reflects the region's development in medicine, architecture, and community life. The Director's House is a national architectural monument, and the area attracts visitors with its picturesque park, eclectic architecture, and a water tower — one of the most unique engineering structures in Northern Vidzeme. A walk through the hospital park can be enriched by exploring the site through 10 audioguide stories that reveal the architecture and history of the buildings, the landscape, artistic expressions, and the evolution and importance of mental health care today.

Valkas iela 11, Strenči
+371 25480566, strencupns.lv
GPS 57.628105, 25.698893



138

138* **Seda Bog**

As a result of peat extraction, a peculiar cultural landscape has emerged here, consisting of peat extraction fields, bog ponds and a narrow-gauge railway, which is used for peat extraction. The Seda Bog walking route is located in the nature reserve *Sedas purvs*, which is an excellent bird protection area. More than 100 bird species nest in the reserve. The route consists of two separate loops, which can be combined by walking additional 2,5 km. The length of the *Jērcēni* side loop is 5,5 km, *Seda* – 4.2 km. On both routes it is possible to climb the viewing tower.

The beginning of Jērcēni loop: GPS 57.7055987, 25.7001324
The beginning of Seda loop: GPS 57.6699587, 25.7514815



139

139* **Puntiņi farm**

Since 1999, *Puntiņi farm* has been growing and processing sea buckthorn, with a focus on traditional craftsmanship and the unique qualities of the berry. During a visit, guests can hear firsthand stories from the owners about the growing and production process, enjoy tastings of high-quality sea buckthorn products, and purchase local goods on site.

Virslavas, Jērcēnu pagasts
+371 29467894
GPS 57.665058, 25.667860



140

140* **Jērcēnmuiža**

The Jērcēnmuiža manor complex was built in the second half of the 19th century and today includes the *manor house Fräulein*, a barn, and a stable. The complex is surrounded by Jaunjērcēni Park, known for its diverse tree species, including impressive oak alleys and uniquely branched lindens. Nearby, by the *Kaņepju* house, stands the *Kaņepju Oak* — crowned Latvia's and the Baltics' *European Tree of the Year* in 2023.

Jērcēnmuiža, Jaunjērcēni
+371 28645054
GPS 57.690994, 25.649724



141

141* **Antiques exposition by Guntis Ķigulis**

Here you will see ancient wooden tools, instruments, furniture, household goods, agricultural and other machinery, which has been collected, inherited and acquired for many years by the landlord Guntis Ķigulis, who will gladly take you on a tour, telling interesting stories about how the exhibits came here.

Vadži, Plāņu pagasts
+371 29263766
GPS 57.603082, 25.810382

142* **Strenči tree nursery**

The *Latvia's State Forests (LVM) Strenči tree nursery* is one of the world's most advanced in terms of ornamental plant growing technologies. About 200 different varieties of conifers and deciduous trees are grown here, and during your visit you can walk freely in an unpolluted and gorgeous environment. Guided tours are available. Groups of pupils are welcome to sign up for the *LVM Mammadaba* masterclasses.

Kociņi, Trikātas pagasts
+371 29395418, +371 29413952
GPS 57.578523, 25.702408



142

143* **Chocolate treat factory R Chocolate**

In the small chocolate delicacy factory in the center of Trikāta you can buy chocolate snacks and homemade ice cream for every taste, while in the workshop you can get to know the masters of making chocolate as well as prepare your own delicacy.

Zelta Auns, Trikāta
+371 29393881
rchocolate.lv
GPS 57.543160, 25.708751



143

*Visits must be booked in advance



144

144* **Līga Nature SPA cosmetics factory**

The production facility of the cosmetics brand *Līga Nature SPA* is located in a picturesque setting on the shores of the Lake Trikāta. Visitors can learn about the natural cosmetics production process and even create their own essential oil-infused cream to take home. In summer, guests can rent boats or SUP boards, or enjoy a relaxing ride on swan-shaped pedal boats across the peaceful lake. Next to the factory is the holiday house *Ezera Oāze*, featuring a sauna and an outdoor hot tub. Cosmetic products are available for purchase on site.

Aizsili, Trikāta
+371 26461060
salonsliga.lv
GPS 57.542506, 25.711334



144

145* **Blueberry field (VI-IX)**

Since 2015, the family farm *Brālēni* has been growing cultivated blueberries. During the berry season, visitors are welcome to take part in the self-picking experience and, if interested, hear the owners' story about the farm. It's a practical and enjoyable way to spend time in a well-kept rural setting. Farm products are available for purchase on site.

Brālēni, Trikātas pagasts
+371 26250493
GPS 57.544280, 25.722628



145

146* **Trikāta Stables**

Trikāta Stables is a family-owned horse breeding farm now run by the fourth generation. Visitors are welcome to enjoy a short horseback ride, pet the horses, and take memorable photos with them.

Jaunupītes, Trikātas pagasts
+371 20021817, +371 26979076
GPS 57.527619, 25.752515



146

*Visits must be booked in advance

FISHING

 Fishing regulations and licenses



OUTDOOR EQUIPMENT RENTAL

147 **Boat rental in Strenči** (boats)
Beverīnas iela 8, Strenči
+371 29763523
GPS 57.625243, 25.690101

148 **Laidavas** (boats, SUP boards)
Laidavas, Jērcēni
+371 29171961
GPS 57.690141, 25.650664

149 **Pie Gaujas** (boats, rafts)
Ciruļi, Valmieras pagasts
+371 26275761, piegaujas.lv
GPS 57.593694, 25.560070

150 **Boat rental in Trikāta** (boats)
Vijupi, Trikāta
+371 28388956
GPS 57.539301, 25.718653




148

138

149

SOUVENIRS

 **Radošā Māja shop**
Valkas iela 1, Strenči, +371 26450095, GPS 57.62734, 25.68902

 **Chocolate treat factory R Chocolate**
Zelta Auns, Trikāta, +371 29393881, rchocolate.lv, GPS 57.543160, 25.708751

 **Origin - Valmiera Region**



 **STRENČI PSYCHONEUROLOGICAL HOSPITAL AUDIOGUIDE**



137

63

62

WHERE TO EAT



37

37 Kanēlis
Valkas iela 4 B, Strenči
+371 25616387
GPS 57.626764, 25.691279

38 Daily
Valkas iela 11 Strenči
+371 29184535
daily.lv
GPS 57.627703, 25.697689

39 Sanvik
Rīgas iela 6, Strenči
+371 29178252
GPS 57.627655, 25.684243

40 Kauči
Kauči, Plāņu pagasts
+371 29413873
GPS 57.629885, 25.742104

41 Brenguļi beer garden (IV-IX)
Brenguļu Alus Dārzs, Brenguļi
+371 22490592
GPS 57.548485, 25.547805



40

WHERE TO SLEEP



58

57 Guest house in Strenči
Rīgas iela 28A, Strenči
+371 20242829
strencu-viesunams.lv
GPS 57.627110, 25.674389

58 Gauja rafters' cabins
Jāņa Ziemeļnieka iela 10, Strenči
+371 28389111
namini.lv
GPS 57.622791, 25.683474

59 Ausmas
Ausmas, Jērcēni
+371 29288247
GPS 57.691297, 25.649579

60 Beverina Secret
Ciruļi, Valmieras pagasts
+371 25704059
beverinasecret.com
GPS 57.593756, 25.559511

61 Saieta nams DEPO
Trikāta
+371 26518718
GPS 57.543136, 25.709764

62 Jaunarāji
Jaunarāji, Brenguļu pagasts
+371 29121702
jaunaraji.lv
GPS 57.547015, 25.489977

63 Baiļi
Baiļi, Kauguru pagasts
+371 29284119
baili.lv
GPS 57.534189, 25.468771

64 Jaunāmuiža apartments
Jaunāmuiža, Kauguru pagasts
+371 26123000
jmuiza.lv
GPS 57.508153, 25.461030

65 Gaujas Priedes
Gaujas Priedes, Kauguru pagasts
+371 27888865
GPS 57.505754, 25.381132

66 Uzbāzes
Uzbāzes, Kauguru pagasts
+371 27036862
uzbazes.lv
GPS 57.496106, 25.459647

67 Miglīnas
Miglīnas, Kauguru pagasts
+371 29527551
miglina.lv
GPS 57.499335, 25.414239

More: visit.valmiera.lv



62



64



67



60

65

64

ACTIVE TOURISM ROUTES



Long distance hiking route *The Forest Trail*



Long distance hiking route *The Way of Saint James (Camino de Santiago)*



Green Railways route: *Smiltene – Valmiera – Ainaži*



Green Railways route: *Lāde – Mazsalaca*



Green Railways route: *Rūjiena – Mōisakūla*



Thematic walks



Cycling routes



Boating routes in Valmiera region



Upesoga boating routes



Outdoor equipment rental



More: visit.valmiera.lv



- Green Railways routes: *Smiltene – Valmiera – Ainaži, Lāde – Mazsalaca, Rūjiena – Mōisakūla*
- Long distance hiking route *The Forest Trail*
- Long distance hiking route *The Way of Saint James (Camino de Santiago)*



JS3068_2025
1 km



Valmiera Tourism information center

Brūņinieku iela 1, Valmiera

tic@valmierasnovads.lv

+371 26332213

visit.valmiera.lv

/ visitvalmiera

**Skaņaiskalns Nature Park
visitor center (VI-VIII)**

Parka iela 36, Mazsalaca

tic@valmierasnovads.lv

+371 28374774

/ skanaiskalns

Guided tours in Valmiera region

Book a guided tour:

tic@valmierasnovads.lv

+371 26332213

visit.valmiera.lv

**Zilaiskalns Cultural history
and visitors center**

Parka iela 2, Zilaiskalns

zkac@valmierasnovads.lv

+371 26122943

ztonis.lv

/ zilakalnaudenstornis

/ zilakalna_udenstornis

**Valmiermuiža Tourism
information point**

Dzirnavu iela 2, Valmiermuiža

VISIT VALMIERA.

Publisher: Valmiera municipality, 2026

Foto: Photo archive of Valmiera municipality and tourism entrepreneurs